



SPENCER

HERITAGE



ALTHORP[®]
LIVING HISTORY[™]



SPENCER
HERITAGE



ALTHORP[®]
LIVING HISTORY[™]



FOREWORD

The histories of the Spencer Family's Heritage and Althorp are so tightly entwined that they would be impossible to unravel and separate. All the Spencers' favourite possessions, which have cascaded down the generations, have ended up in Althorp, this most English of houses, just an hour north of London. Enter its 550- acre park, and you find yourself in a peaceful setting that radiates timeless good taste, with its swathes of fine English oaks stretching out in every direction, while the family's rare herd of black fallow deer graze beneath.

It's a scene familiar to each of the 19 generations of Spencers who have known and loved this corner of England. When Columbus was sailing towards America, my family were farming here. When Britain was defying Hitler, it was a Spencer cousin who helped lead the way – our wartime prime minister's full family name was Spencer-Churchill, though everyone shortens him to Winston Churchill. All through history, during the past five centuries or more, it seems you will find a Spencer there or thereabouts, making their mark, doing their best.

These Spencer ancestors were able to indulge their tastes – to commission art, furniture, and all the finer things in life. You can see the Spencer touch in every corner of Althorp – this historic house that my family has called "home" for over 500 years, and which for the past decade, has been given unprecedented care and attention. A massive programme of restoration and repair has taken place, which our partnership with Theodore Alexander has certainly helped. I like to think that, for generations, the house has looked after the furniture. Recently, the very finest handmade reproductions of that furniture by Theodore Alexander have helped restore the house to the very best condition. It seems right and fair.

It is not just the tangible pieces that make up a family's heritage, of course: it is the people themselves. While the continued ownership and enjoyment of this great house by my family is something that I remain always so grateful for, I never forget the expectations and hopes of generations gone by.

This house, this family – together, they sum up something that is authentic and pure, historic yet still deeply relevant. Althorp has a living history, yes. But, underpinning it all is that factor that sets the tone, and sums up the good fortune, the continuity and the fine taste that underscore everything tangible and intangible connected with this exceptional furniture line - something I call Spencer Heritage.

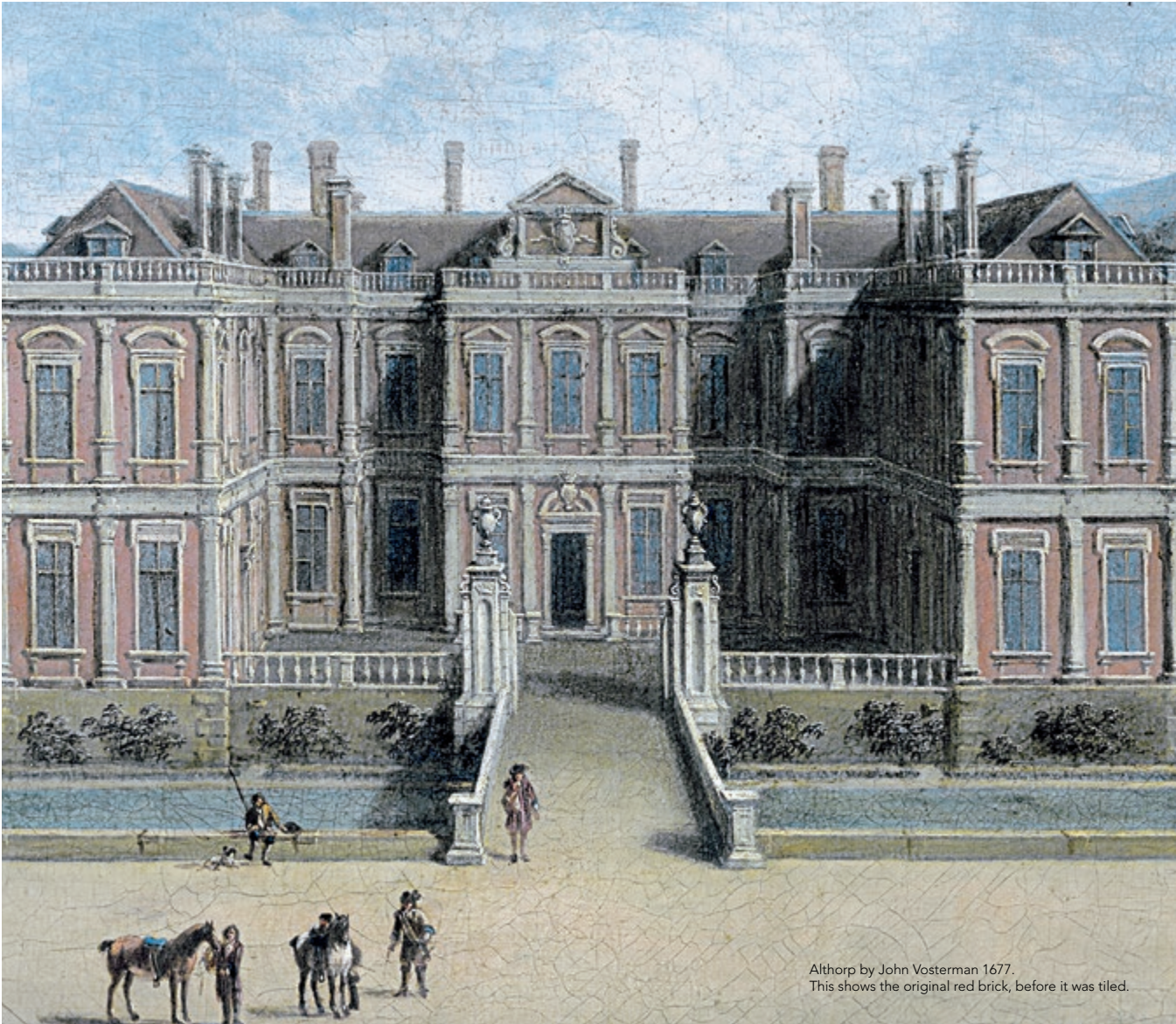
Spencer.

Charles Edward Maurice,
9th Earl Spencer



CONTENTS

Tables	8
Seating and Upholstery	22
Cabinets	44
Desks	60
Mirrors and Console Tables	66
Dining Tables and Chairs	70
Beds	78
Victory Oak	86



Althorp was built with classically aristocratic aims in mind - to demonstrate the wealth and power of the early Spencers, to show off their exquisite collections (of art, furniture, books, silver and porcelain), and to entertain.

But there was always an understanding that the owners of this great house had an obligation to share their good fortune with others. Distinguished visitors - kings, queens, foreign dignitaries - had only to ask, and the doors of this private palace were of course thrown open. But guests with less rarefied backgrounds could also ask to enjoy the contents - and a discreet tip placed in the hand of the head housekeeper would secure a tour, if the family's privacy was not unduly compromised.

These historic houses were dynamic places, full of bustle and industry ensuring the occupying family could lead pampered, smoothly-run, lives: even a little over a century ago, Althorp employed 65 permanent house staff, while another 45 worked in the gardens and Park, and a further 40 grooms attended the horses in the Stables. There was therefore less of a problem in absorbing a few extra people, curious to see the splendours within.

After the First World War there was a drastic belt-tightening in England's stately homes. It was hard to find staff, and estate incomes dipped while taxes rose. Between the wars, my grandfather (Jack - the 7th Earl Spencer) often welcomed visitors that shared his keen appreciation of the house and its chattels. His diaries show he was less thrilled by those who couldn't match his knowledge - he was almost comically scathing of what he perceived to be willful ignorance, when, in truth, he was asking way too much of his audience's intellect.

My father, by contrast, just adored people. He chatted happily with all comers to Althorp, as at ease with a prince as with a primary school teacher. He was modern in his outlook - sharing Althorp with enormous generosity, and without snobbery.

I've had the privilege of being in charge of Althorp, for quarter of a century now. I've certainly received some interesting guests - including former presidents Mandela and Gorbachev - and, through the annual Althorp Literary Festival, a never-ending stream of internationally acclaimed figures: novelists, sportsmen, comedians, politicians, and experts in dozens of fields. Meanwhile, my wife Karen has called on Althorp to support the excellent charity that she founded and runs - Whole Child International - which assists orphaned and abandoned children in the Developing World.

But the high points of our year are those weekends when we fill Althorp with family and friends, as the 18 preceding generations of my family have done for 500 years. The original builder and occupant of Althorp - Sir John Spencer - left it as a condition of his Will that Althorp should always be a place of entertainment. It's not a tough duty to fulfill - whether with loved ones, or interested outsiders. It was never designed to be a place to hide away in - it was painted on the broadest possible canvas, as something spectacular that demanded widespread admiration and appreciation.



John Spencer, created Earl Spencer



George John, 2nd Earl Spencer



John Charles, 3rd Earl Spencer



Frederick, 4th Earl Spencer



John Poyntz, 5th Earl Spencer



Charles Robert, 6th Earl Spencer



Albert Edward John, 7th Earl Spencer



Edward John, 8th Earl Spencer



Charles Edward Maurice, 9th Earl Spencer

Owners of Althorp
[1500s to 1783]

Sir John Spencer, Kt,
bought Althorp 1508 (. 1522)
married Isabell Graunt

Sir William Spencer, Kt, (. 1532)
married Susan Knightly

Sir John Spencer, Kt, (. 1586)
married Katherine Kitson

Sir John Spencer, Kt, (. 1599)
married Mary Catlyn, 1566

Sir Robert Spencer 1570 - 1627
Created Baron Spencer of Wormleighton
married Margaret Willoughby, 1587
(. 1597)

William, 2nd Baron Spencer, KB 1591 - 1636
married Lady Penelope Wriothesley, 1614
1598 - 1667

Henry, 3rd Baron Spencer 1620 - 1643
created Earl of Sunderland , KG 1643
married Lady Dorothy Sidney, 1639
1617 - 1684

Robert, 2nd Earl of Sunderland, KG 1641 - 1702
married Lady Anne Digby, 1665
1646 - 1715

Charles, 3rd Earl of Sunderland, KG 1675 - 1722
1) married Lady Arabella Cavendish, 1695
1673 - 1698,
2) married Lady Anne Churchill, 1699
(. 1716)
3) married Judith Tichbourne, 1717
(. 1749)

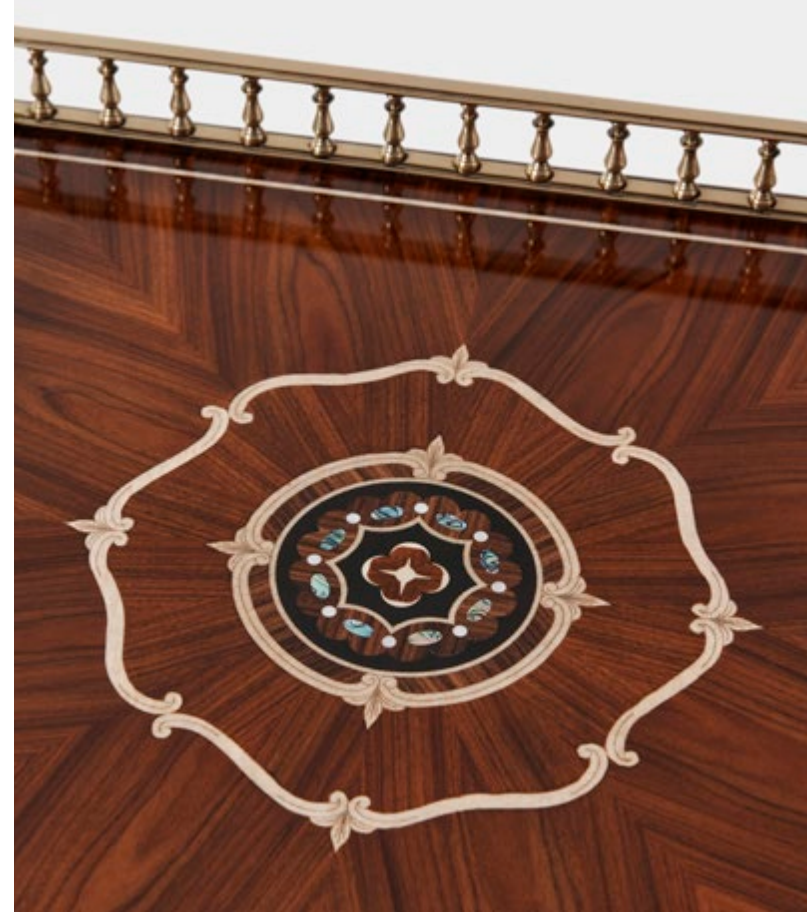
Robert, 4th Earl of Sutherland 1701 - 1729*

Charles, 5th Earl of Sunderland,
3rd Duke of Malborough, KG 1706 - 1758*
(quitted Althorp 1734)

Hon. John Spencer, 1708 - 1746*
married Lady Georgina Carteret, 1734
1716 - 1780

John Spencer, created Earl Spencer 1765
1734 - 1783
married Georgiana Poyntz, 1775
1737 - 1814

*Son of Charles, 3rd Earl of Sunderland
and Lady Anne Churchill



TABLES



AL11089
BEATS IN TIME

A mahogany and brass drum shaped box on a brass stand with lion claw feet joined by concave stretchers and painted with the Spencer coat of arms. The original circa 1820.

12¾ x 12¾ x 25½ in | 32.39 x 32.39 x 64.77 cm

AL50195
SOUTH DRAWING ROOM
OCCASIONAL TABLE

A renowned piece in the collection, this turned occasional pedestal table is sure to command attention. Seen here in Dibdin Crotch finish and complemented with an incredibly intricate brass inlaid apron inspired by a table in the South Drawing Room of the Althorp House. The brass-wrapped posts are supported by three alluring sabre legs finished with embellished brass cappings.

24 x 24 x 26 in | 61 x 61 x 66 cm



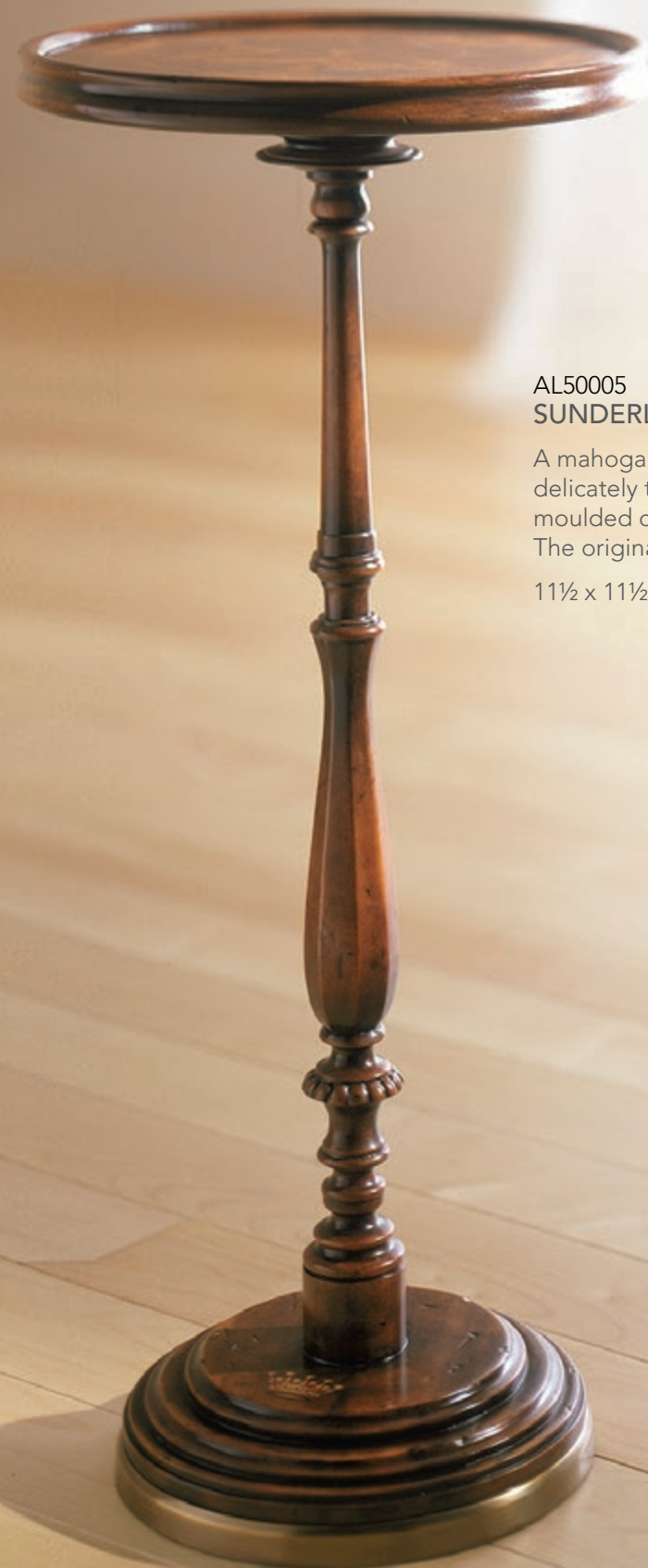
THE SOUTH DRAWING ROOM

Once an impractical dining room, which lay as far from the kitchens as it is possible to be in Althorp, this many-windowed room looks out on to the gardens and Stables.

Both comfortable and elegant, the South Drawing Room boasts 15 portraits by Sir Joshua Reynolds - a good friend of the Spencers - including those of three generations of the family.

The miniatures in the alcoves include a portrait of Admiral Lord Nelson, one of whose main patrons was George John, Second Earl Spencer.





AL50005
SUNDERLAND CANDLE STAND

A mahogany candle stand, the circular moulded edge top on a delicately turned baluster column terminating in a dished and moulded circular brass bound platform base.
The original Regency, circa 1830. The Sunderland Room.

11½ x 11½ x 28¼ in | 29.21 x 29.21 x 71.76 cm



AL11033
THE BUTTERFLY TABLE

A marquetry inlaid butterfly work table, the top inlaid with Morado, burl and amboyna and with two hinged 'wing' panels opening to reveal the painted Spencer crest, on a ring and baluster turned column and delicate down swept tapering legs and peg feet.

17 x 15¾ x 28 in | 43.18 x 40.01 x 71.12 cm



AL50038
THE ADMIRALTY BEDSIDE

A mahogany bedside lamp table, the rectangular top fitted with a finely cast gallery of crossed sabres above two graduated drawers fitted with hilted sabre drop handles on square tapering legs terminating with brass cappings.
The original Regency.

16 x 14 x 29½ in | 40.64 x 35.56 x 74.93 cm

AL50079
ADMIRALTY OCCASIONAL TABLE

A mahogany lamp table, the circular brass bound top fitted with a frieze drawer on three bound brass hilted sabres mounted on a trefoil platform base with brass lion's paw feet.

Inspired by the 2nd Earl Spencer, appointed 1st Lord of the Admiralty in 1795. The original Regency.

16¾ x 16¾ x 28 in
42.55 x 42.55 x 71.12 cm



AL50104
OVAL TIERS

A two tiered oval lamp table, each tier brass bound and between turned brass column supports surmounted by finials and terminating in brass castors.

The original Regency, circa 1820.

21¼ x 16¼ x 23½ in | 54.29 x 41.59 x 59.69 cm





AL11070
THE SPENCER DRESSING BOX

A mahogany dressing table on stand, the hinged top opening to reveal a bevelled mirror back, with bowed and square swing panels revealing a fitted interior, with a drawer below and a side bowl drawer to the apron, on splayed legs joined by an X-stretcher with the Spencer coronet.
The original George III, circa 1780.

16 x 13 x 33 in | 40.64 x 33.02 x 83.82 cm



AL50179
DUMONT NEST OF TABLES

A nest of three fine mahogany and Morado veneered tables with fine mother of pearl inlay, the main square table with a three quarter turned brass gallery on ring turned tapering legs with gilt details, on brass cappings and castors; the smaller folding x base 'coaching' tables storing within the larger table.

Large table: 19½ x 19½ x 24¾ in | 49.5 x 49.5 x 63 cm
Small tables: 16¾ x 16¾ x 20¼ in | 42.5 x 42.5 x 51.5 cm



AL50061
INGENIOUS TABLES

A mahogany lamp table, the square three quarter brass galleried top on ring turned legs joined by stretchers, the underside with two removable X stand, fold-out circular occasional tables.
The original Regency, circa 1830.

Large table: 19½ x 19½ x 24 in | 49.53 x 49.53 x 60.96 cm
Small tables: 16¾ x 16¾ x 20¼ in | 42.5 x 42.5 x 51.5 cm



AL50110
FREDERICK’S TABLE

A flame veneer and mahogany lamp table, the oval top with a fine three quarter brass gallery, on splayed, gilt leaf capital, turned and fluted legs joined by an undertier.

22 x 18 x 29¾ in | 55.88 x 45.72 x 75.56 cm



AL50065
CARYATIDS

A mahogany and ormolu mounted occasional table, the brass bound shaped circular top above a Morado veneered frieze enclosed by foliate mounts, on three cabriole legs with caryatid mounts terminating in sabots, united by a shaped undertier.

17¾ x 18 x 29 in | 45.4 x 45.72 x 73.66 cm



AL50174
AFTER DINNER DRINKS TABLE

A flame mahogany, Movingue and rosewood banded Gueridon table, the circular top with a brass molded edge, the plain frieze above scrolled legs joined by a brass molded stepped tier and acanthus leaf carved and gilt feet, on a trefoil concave sides base with turned mahogany bun feet.

26 x 26 x 26 in | 66.04 x 66.04 x 66.04 cm



AL50035
THE SOUTH DRAWING ROOM NEST OF TABLES

A nest of three Morado and mahogany tables, with a brass three quarter galleried top, each table on two turned and brass mounted end supports joined by a bowed brass stretcher, on downswept and brass ball feet.

The originals circa 1820, in the South Drawing Room at the Althorp.

21 x 13½ x 29¾ in | 53.34 x 34.29 x 75.57 cm

18¼ x 12¾ x 28¼ in | 46.4 x 32.4 x 71.7 cm

15¼ x 12¾ x 27½ in | 38.6 x 32.4 x 70.1 cm



SEATING AND
UPHOLSTERY



AL40023
THE WOOTTON HALL CHAIR

A finely carved mahogany hall chair, the arched cartouche back with acanthus leaf details centred by the hand painted Spencer crest, the solid seat above a swag carved seat rail on square tapering legs.
The original George III, in The Wootton Hall at Althorp.

20½ x 21 x 40 in | 52.07 x 53.34 x 101.6 cm
Seat height: 17¼ in (43.82 cm)

A finely mahogany hall chair. The original George III, in The Wootton Hall at Althorp. The striking Palladian hall you first enter incorporates a series of country scenes by the English artist John Wootton (c. 1682-1764)- which lends the hall its name. Wootton's fame rests as the specialist English sporting painter of his day. Among other commissions, he executed similar designs for the Great Hall at Longleat. He would not have painted in situ, but in a studio in London, having taken measurements of the spaces that needed to be filled. They were painted as part of scheme ordered by the Fifth Earl of Sunderland, who, like his brother and heir at Althorp, was a passionate fox-hunter. The life size studies of the Earl's favourite mounts face the visitor on entering. The canvases running the length of sides, show Lord Spencer and his friends riding with the Althorp and Pytchley hounds with the riders individuals identified. The ruins of nearby Holdenby catsle, the core of which still survives today, further identify the scenes. The detail of hall's construction are not fully recorded, but it is probably by Colin Campbell, through he died in 1729 before the work was undertaken. Roger Morris completed the commission in 1733. For many tastes the hall's proportions make it the most satisfying room in the house, with a cool dignity, appropriately lit. Pevsner calls it 'the noblest Georgian room in the county'. The airiness comes from the high ceiling which rises almost to the height of the house. Its deeply coffered coving bears an octagonal design, with eagles on the corner buttresses. Beneath there is a frieze alternating plaster fox heads with hounds.

THE WOOTTON HALL

Named after John Wootton, the artist responsible for the huge paintings that line the high walls, this was once the archway entrance to the inner courtyard of Althorp. It was remodelled as part of extensive work carried out between 1729-1733, with John Wootton's paintings of the local hunt being added at the end of the project. The room's perfect balance of simplicity and grandeur makes a particularly bold impression, and the height of the room – almost the full height of the house – creates an appropriately dignified and perfectly proportioned entrance to the House. Nikolaus Pevsner described this as 'the noblest Georgian room in the county'.

The Italian marble checkerboard floor was laid during the First World War. It gives the room handsome depth and helps to direct the eye around the Hall. It also provides outstanding acoustics: as a teenager Diana, Princess of Wales, liked to practice tap dancing here.





AL44001
THE GILLOWS STOOL

A carved mahogany 'X' frame hall stool in the manner of Gillows of Lancaster, the bowed moulded edge solid seat on serpentine carved 'X' frame supports centred by a shaped foliage carved panel hand painted with the Spencer crest and with gilt 'C' scroll accents to the sides. The original George III, circa 1760.

23½ x 15¼ x 19¾ in
59.69 x 38.74 x 50.17 cm





A391
GALLERY LOVE SEAT

Two-seater sofa with a serpentine arched back and two loose seat cushions. This piece includes an artisan-shaped floral carved fluted frieze with four finely carved gold leaf cabriole legs terminating in knurl and peg feet inspired by the elegant Picture Gallery Sofa found in the Althorp House.

81 x 43 x 43 in | 205.74 x 109.22 x 109.22 cm



A491
GALLERY SOFA

An early Victorian three-seater sofa inspired by the elegant Picture Gallery Sofa found in the Althorp House, this serpentine arched back sofa with over scrolled arms and cushioned seat is handcrafted using only the finest materials and heirloom quality upholstery techniques. Accented by a floral carved and fluted frieze, this piece rests on eight gold leaf finely carved cabriole legs terminating in knurl and peg feet.

107¼ x 43 x 41½ in | 272.6 x 109.2 x 105.5 cm

A18
THOMAS HOPE CHAIR

A mahogany armchair in the manner of Thomas Hope, the bowed and panel carved top rail above a 'U' shaped seat, turned armrests with lions head carved finials, the seat-rails decorated with trailing husk carving on downswept moulded legs terminating in lion paw feet.

The original Regency, circa 1805.

30 x 21½ x 31 in | 76.2 x 54.61 x 78.74 cm

Seat height: 20 in (50.8 cm)

Arm height: 26 in (66.04 cm)



A04.5
REGENCY LIBRARY BERGÈRE

A mahogany framed double caned Bergère, the reeded bowed back leading to part padded arms on turned uprights enclosing a cushion seat, the panelled seat-rail on turned and fluted legs terminating in brass cappings and castors.

The original Regency, circa 1820.

28 x 32½ x 39 in | 71.12 x 82.55 x 99.06 cm

Seat height: 20 in (50.8 cm)

Arm height: 29 in (73.66 cm)



AL41067
AD VICTORIAM

An exceptionally well hand carved mahogany library armchair, the back in the shape of a ship's transom carved with a Coat of Arms centred by the Spencer crest and flanked by Victory wreaths. Inspired by a Regency original.

27¼ x 25 x 44¼ in | 69.2 x 63.5 x 112.4 cm

Seat height: 21 in (53.3 cm)

Arm height: 26 in (66 cm)



A12
THE EARL'S DRESSING CHAIR

A mahogany and caned Library chair, the curved waisted top rail above a caned back and sides, with baluster turned uprights on fluted square tapering legs.

The original Regency circa 1820. Earl Spencer's dressing room.

24 x 25 x 33 in | 60.96 x 63.5 x 83.82 cm

Seat height: 20 in (50.8 cm)

Arm height: 28 in (71.12 cm)

THE LIBRARY

The cool, inviting dignity of the long Library has been created through the use of a dozen shades of white and off-white, which make the perfect backdrop to the rich colour and warm tones of the room's myriad of book spines. The current collection dates from 1892 and the majority of it took just four months to amass. They were bought to replace the Second Earl's astonishing library, which had to be sold because of the family's waning fortunes during the late nineteenth century agricultural slump. That world-class library was sold to the John Ryland's Memorial Library in Manchester in 1892, the same year that the ornate ceiling by John MacVicar was installed.





A216
THE ALTHORP WINGBACK

An upholstered wingback armchair, the arched back and wings above a cushion seat enclosed by overscrolled arms, on fluted tapering legs terminating in brass cappings. The original George III, circa 1770.

34 x 35 x 48 in | 86.36 x 88.9 x 121.92 cm
Seat height: 19 in (48.26 cm)
Arm height: 26½ in (67.31 cm)



A282
FIRESIDE

An upholstered mahogany 'easy' chair, the scroll over tufted back with scroll terminal padded arm on turned uprights, the tufted seat on a serpentine seat-rail on turned and tapering legs with brass cappings. Inspired by a 19th century original in the manner of Gillows of Lancaster.

31 x 38½ x 31½ in | 79 x 98 x 80 cm
Seat Height: 18.5 in (47 cm)
Arm height: 22 (56 cm)



Detail of A282

A218
THE TUB CHAIR

A button upholstered tub chair, the curved back and arms above a circular seat, on turned legs. The original Victorian.

33 x 34 x 34 in | 83.8 x 86.5 x 86.5 cm



A277
THE SPENCER HOUSE CHAIR

A hand carved mahogany framed and upholstered chair, the serpentine trailing husk carved cartouche back centred by a floral carved crest, with padded arms and finely carved scroll uprights, enclosing an upholstered seat above a shaped, floral carved and fluted frieze, on carved cabriole legs terminating scroll feet.

28 x 28 x 42 in | 71.12 x 71.12 x 106.68 cm



A461
THE ALTHORP LIBRARY SOFA

A deep button upholstered Chesterfield Sofa, the overscrolled back and arms on tapering and spiral carved legs. The original Regency, circa 1840.

89 x 37 x 33 in | 226.06 x 93.98 x 83.82 cm



A463
THE SPENCER HOUSE SOFA

A mahogany and gilt framed and upholstered three seater sofa, the serpentine trailing husk carved top rail centred by a floral carved crest, with padded arms and finely carved scroll uprights, enclosing a cushion seat above a shaped, floral carved and fluted frieze on eight carved cabriole legs terminating scroll feet.

94 x 38 x 41 in | 238.76 x 96.52 x 104.14 cm

A214.5
THE INDIA SILK BEDROOM CHAIR

A mahogany and parcel gilt Bergère, the arched and padded scoop back with a carved top rail leading to part padded and sinuously scrolled arms and uprights enclosing a cushion seat above a fluted and paterae decorated frieze on turned and fluted tapering legs carved with leaves and terminating in peg feet. The original George III chairs and are now in the India Silk Bedroom.

32 x 34 x 36 in | 81.28 x 86.36 x 91.44 cm
Seat height: 20 in (50.8 cm) | Arm height: 25½ in (64.77 cm)



A204.5
UNDULATING ARMCHAIR

A finely carved and gilt Neo-classical matching armchair; the gently undulating rectangular padded back and arms with turned; fluted and leaf carved uprights above a Greek key frieze on turned legs. The original Regency, circa 1800.

33 x 32 x 37½ in | 83.82 x 81.28 x 95.25 cm
Seat height: 21 in (53.34 cm)
Arm height: 32 in (81.28 cm)



A482
THE AFTERNOON VISIT

A finely carved mahogany framed upholstered sofa, the serpentine tight back above a bench cushion seat enclosed by waterfall arms, on a fluted and rosette carved seat rail with fluted tapering legs with brass cappings. Inspired by a George III original. The distinctive camel back is a signature of Georgian sofas.

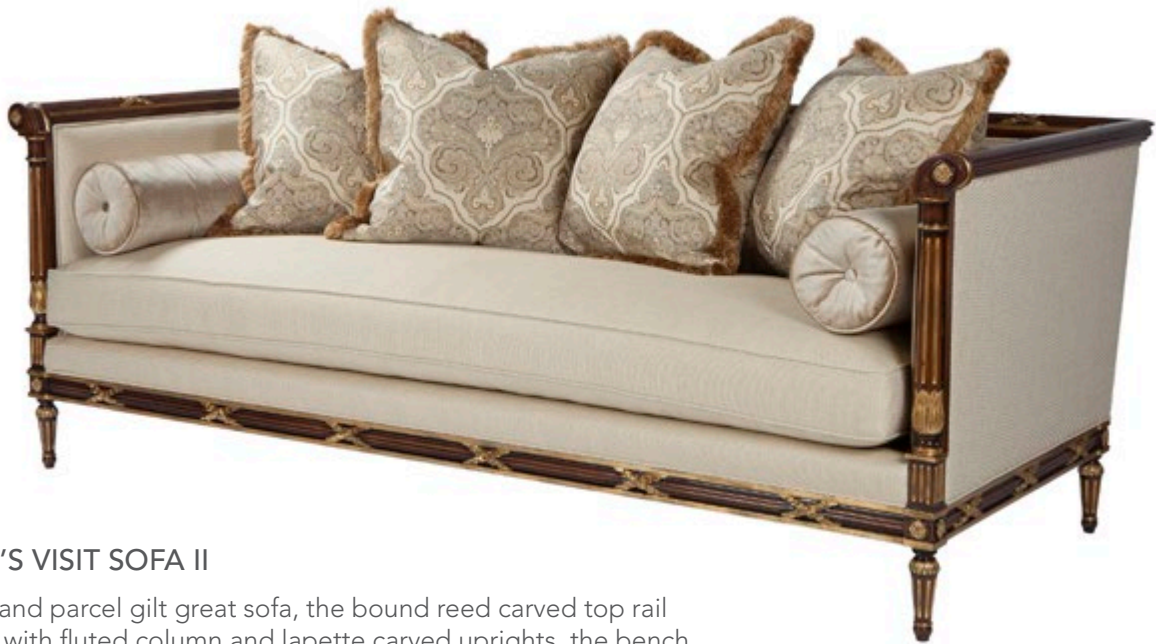
92 x 34 x 42.5 in | 234 x 86 x 116 cm
Seat Height: 19.5 in (50 cm) | Arm height: 28.5 in (72 cm)



A408.5
UNDULATING SOFA

A finely carved and gilt Neo-classical sofa, the gently undulating rectangular padded back and arms with turned, fluted and leaf carved uprights above a Greek key frieze on turned legs. The original Regency, circa 1800.

65½ x 32 x 37½ in | 166.37 x 81.28 x 95.25 cm
Seat height: 21 in (53.34 cm) | Arm height: 32 in (81.28 cm)



A480-90
THE REGENT'S VISIT SOFA II

A hand-carved and parcel gilt great sofa, the bound reed carved top rail with high arms, with fluted column and lapette carved uprights, the bench cushion seat and tight back with two bolster and four throw pillows on a bound reed carved and flowerhead seat rail with acanthus carved and fluted tapering legs.

Inspired by a George III original.

90 x 39 x 36 in | 228.6 x 99.06 x 91.44 cm
Seat height: 21 in (53.34 cm) | Arm height: 33 in (83.82 cm)
* 33"H (81cm) to top of back frame



A480-110
THE REGENT'S VISIT SOFA

A hand-carved and parcel gilt great sofa, the bound reed carved top rail with high arms, with fluted column and lapette carved uprights, the bench cushion seat and tight back with two bolsters and five throw pillows on a bound reed carved and flowerhead seat rail with acanthus carved and fluted tapering legs.

Inspired by a George III original.

110 x 39 x 36 in | 279.4 x 99.06 x 91.44 cm
Seat height: 21 in (53.34 cm) | Arm height: 33 in (83.82 cm)
* 33"H (81cm) to top of back frame



A280
THE REGENT'S VISIT

A hand-carved and parcel gilt upholstered chair, the bound reed carved top rail with high arms, with fluted column and lapette carved uprights, the cushion seat and tight back with a throw pillow, on a bound reed carved and flowerhead seat rail with acanthus carved and fluted tapering legs.

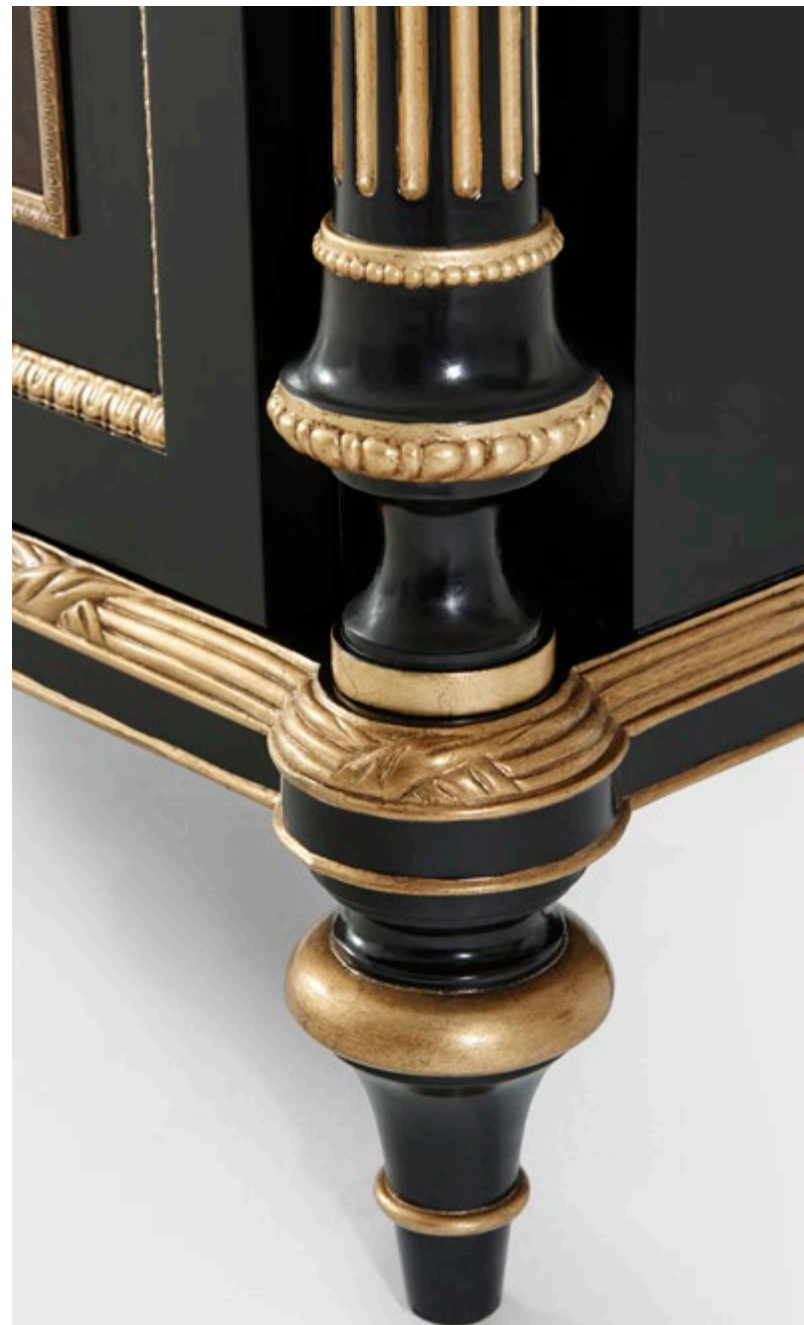
Inspired by a George III original.

36 x 35 x 36 in | 91.44 x 88.9 x 91.44 cm
Seat height: 21 in (53.34 cm) | Arm height: 33 in (83.82 cm)
* 33"H (81cm) to top of back frame





CABINETS





AL61091
DAGUERRE CHINOISERIE CABINET

An ebonized mahogany and parcel gilt Chinoiserie side cabinet, the rectangular molded edge top with protruding rounded corners, above two brass molding paneled drawers with brass handles, above two brass molding paneled and carved doors with hand painted Chinoiserie scenes, the base with bound reed carved details flanked by turned and fluted columns and on turned and tapering legs.

46 x 13 x 32 in | 116.8 x 33 x 81.3 cm



AL61090
MEDALLION SIDEBOARD

An ebonized serpentine sideboard, the breakfront top with a pierced fretwork gallery above two fretwork trellis doors enclosing two further shaped doors with an elaborate Chinoiserie painted cartouche handle, the interior with three sections each with an adjustable shelf, above a pierced fretwork apron on square legs with Marlborough feet.

62 x 19¼ x 38 in | 157.5 x 48.9 x 96.5 cm



AL61087
PEACOCK CABINET

A finely hand painted and black lacquered cabinet on stand, the cabinet with gold leaf and hand painted decoration of peacocks in a landscape, with fine repousse chased brass mounts, on a base with chamfered legs and fretwork spandrels hand painted in floral and lattice decoration. The LED lit interior fitted as a bar with a mirror back and adjustable glass shelf.

37 x 21 x 64 in | 93.98 x 53.34 x 162.56 cm





AL60030
THE INDIA SILK BEDSIDE

A flame veneered and mahogany bombé bedside chest of drawers, the rectangular moulded edge top above a brushing slide with three shaped serpentine and graduated drawers below, applied with finely cast brass escutcheons and drop handles, on a plinth base with ogee bracket feet.
The original George III, circa 1770, in the manner of Thomas Chippendale.

28 x 19¾ x 30 in | 71 x 50.2 x 76.2 cm



AL60009
THE INDIA SILK SERPENTINE

A large mahogany and flame veneered bombé chest of drawers, the rectangular moulded edge top above a brushing slide with four shaped serpentine and graduated drawers below, applied with finely cast brass escutcheons and drop handles, on a plinth base with ogee bracket feet.
The original George III, circa 1770.

43 x 20 x 32 in | 109.22 x 50.8 x 81.28 cm



AL60008
ARABELLA'S REGENCY CHEST

A mahogany and flame veneered bowfront chest of drawers, fitted with a brushing slide and four graduated rounded drawers fitted with lion's mask drop handles flanked by reeded and bound column uprights on brass lion's paw feet.
The original Regency.

38 x 22 x 36 in | 96.52 x 55.88 x 91.44 cm



AL60031
THE INDIA SILK DRESSER

A fine flame veneered and mahogany serpentine dresser, the moulded edge top above an arrangement of twelve bombé and shaped drawers with brass handles and escutcheons, on ogee bracket feet.
Inspired by a George III original in the manner of Thomas Chippendale.

70½ x 20 x 34½ in | 179 x 50.8 x 87.6 cm



AL64001
THE WASHINGTON CHEST

An oak blanket chest, the moulded edge top, above a panelled back and sides, the front carved with ovals and lozenges on stile supports with ogee spandrels. The original English, circa 1650.

53 x 23 x 28¼ in | 134.62 x 58.42 x 71.76 cm



AL63004
THE SUNDERLAND ROOM BOOKCASE

A mahogany and flame veneered breakfront bookcase, the upper sections with a moulded cornice above a fluted frieze ornamented with dentils and oval rosettes, the bold diamond lattice astragal glazed doors enclosing reeded edge shelves above two cupboard doors, each flanked by three short drawers with swag drop handles on a plinth base.

96¾ x 18 x 96½ in | 245.75 x 45.72 x 245.11 cm

AL50068
PIERCED VITRINE

A mahogany and glazed vitrine, the rounded rectangular top with a pierced brass gallery, each drop side with an inset glazed panel, the interior with a mirror base with a shaped apron below on ormolu mounted cabriole legs with sabots. The original Louis XV, circa 1840.

25½ x 19¾ x 34¼ in | 64.77 x 50.17 x 87 cm



AL60044
VISCOUNT'S NIGHTSTAND

A flame mahogany, Movingue and rosewood banded nightstand, the rectangular top with canted corners and a three quarter brass gallery, three drawers with fine brass handles and on paneled tapering legs.

28 x 20 x 27 in | 71.12 x 50.8 x 68.6 cm



AL60056
NORTHAMPTON CHEST OF DRAWERS

Resting upon an 18th century bracket foot, this is a classic reproduction of a chest currently in the Ante Room of the Althorp House. Set to become a very distinguished part of our Althorp Living History Collection, this piece has been modernized with refined frieze molded drawers complimented by antique brass handles and fluted posts sitting atop of a distinguished serpentine base.

48 x 20½ x 36 in | 121.9 x 52.1 x 91.5 cm

AL60043
VISCOUNT'S CHEST OF DRAWERS

A flame mahogany, Movingue and rosewood banded chest of drawers, the rectangular top with canted corners, the two short drawers with lapette carved recessed molding, with a paper twist and rosette carved molding below with two further long drawers, all with fine brass handles and on paneled tapering legs.

46 x 21 x 36 in | 116.84 x 53.34 x 91.44 cm





AL61095
THE HOLLAND BAR CABINET

A very finely carved flame mahogany veneered architectural bar cabinet of the Althorp House façade, the upper section with a gabled brass galleried roof with 8 dormers, with a Spencer coat of arms pediment, the Cabinet with 21 Morado and Sycamore strung Windows, brass detailed pilasters and a door; concealing four cabinet doors enclosing a fitted and LED lit interior for a bar with a mirror back, glass shelves and miniature staircase in mahogany and brass, the molded base top with.

61¾ x 22¾ x 82¼ in | 156.84 x 57.78 x 208.9 cm



AL65003
THE ALTHORP SECRETARY

A flame veneered and morado banded Bureau Cabinet, with an architectural cornice centred by a gilt crest, above two glazed doors enclosing 45 drawers and 19 pigeon holes above two slides, the bureau opening to reveal a leather inset slide and a fitted interior with 8 drawers below enclosing a cabinet and drawer below.

44¼ x 26¾ x 98 in | 112.4 x 67.63 x 248.92 cm





DESKS



AL71027HN
THE GRAND STAIRCASE

A fine flame veneered bureau, the sloping fall enclosing a fitted interior of faux book and hidden drawers and cabinets, the staircase gallery interior, above a short frieze drawer flanked by dummy drawers, with two short and two long drawers below, on bracket feet; the sides with further drawers and hidden drawers.

45½ x 23¼ x 44 in | 115.57 x 59.1 x 111.76 cm





AL71008
THE PRINCESS OF WALES BEDROOM BUREAU PLAT
WRITING TABLE

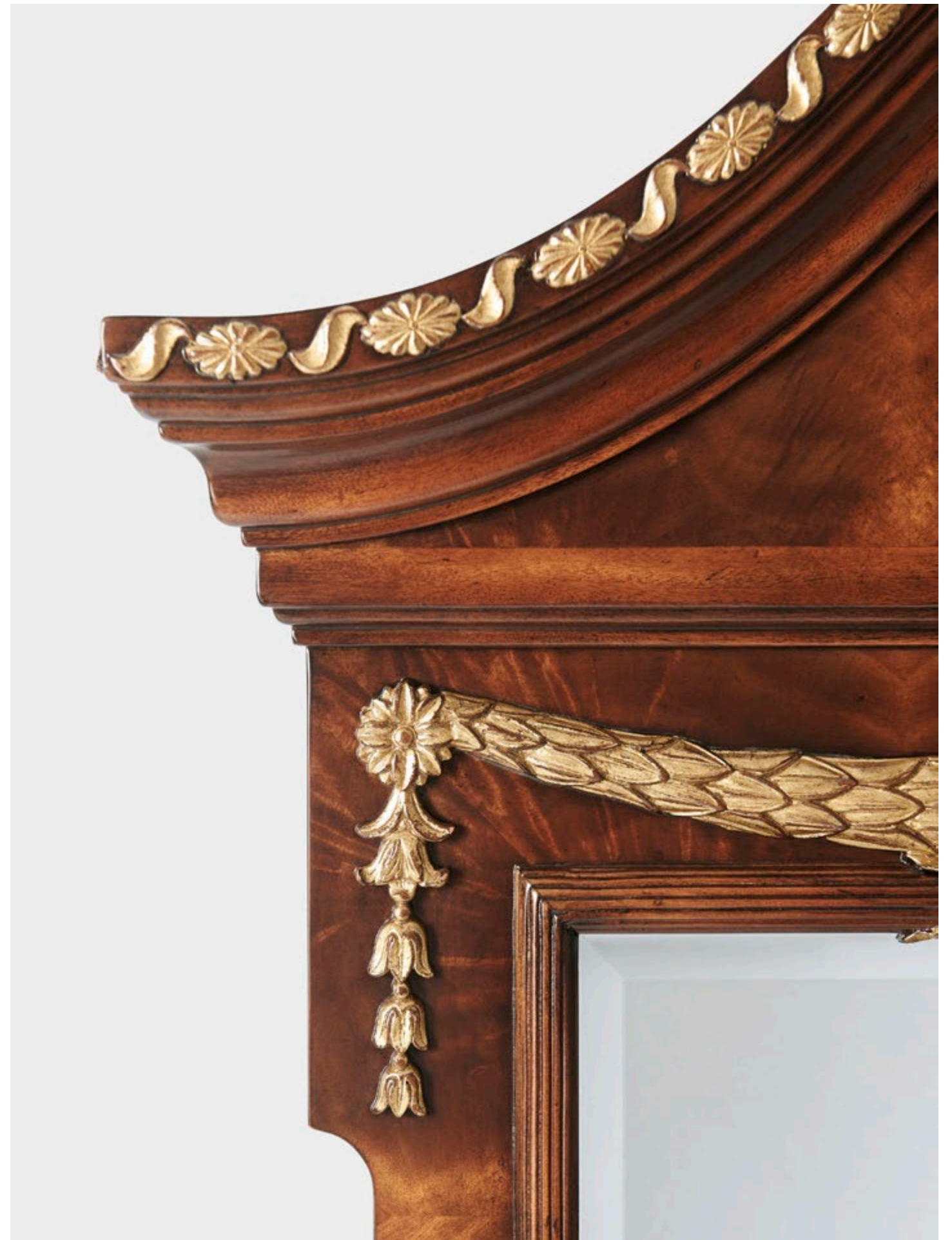
A morado veneered bureau plat, the serpentine brass bound moulded edge top inset with a gilt tooled leather writing surface, above three serpentine frieze drawers fitted with Rococo brass handles on cabriole legs with brass cartouche mounts trailing to sabots.

46 x 27 x 30¼ in | 116.84 x 68.58 x 76.84 cm





MIRRORS AND
CONSOLE TABLES





AL53058
LONG HALL CHINOISERIE CONSOLE TABLE

A fine ebonized and Chinoiserie painted Console Table with gilt detailing, the molded edge rectangular top with a finely painted garden panorama on a cream background, the pierced fretwork frieze on chamfered legs with Pointe feet.

60 x 14 x 34 in | 152.4 x 35.6 x 86.4 cm



AL53059
LONG HALL BURL CONSOLE TABLE

A fine ebonized and poplar burl veneered Console Table with gilt detailing, the molded edge rectangular top veneered with poplar burl, the pierced fretwork frieze on chamfered legs with Pointe feet.

60 x 14 x 34 in | 152.4 x 35.6 x 86.4 cm



AL31038
THE INDIA SILK BEDROOM MIRROR

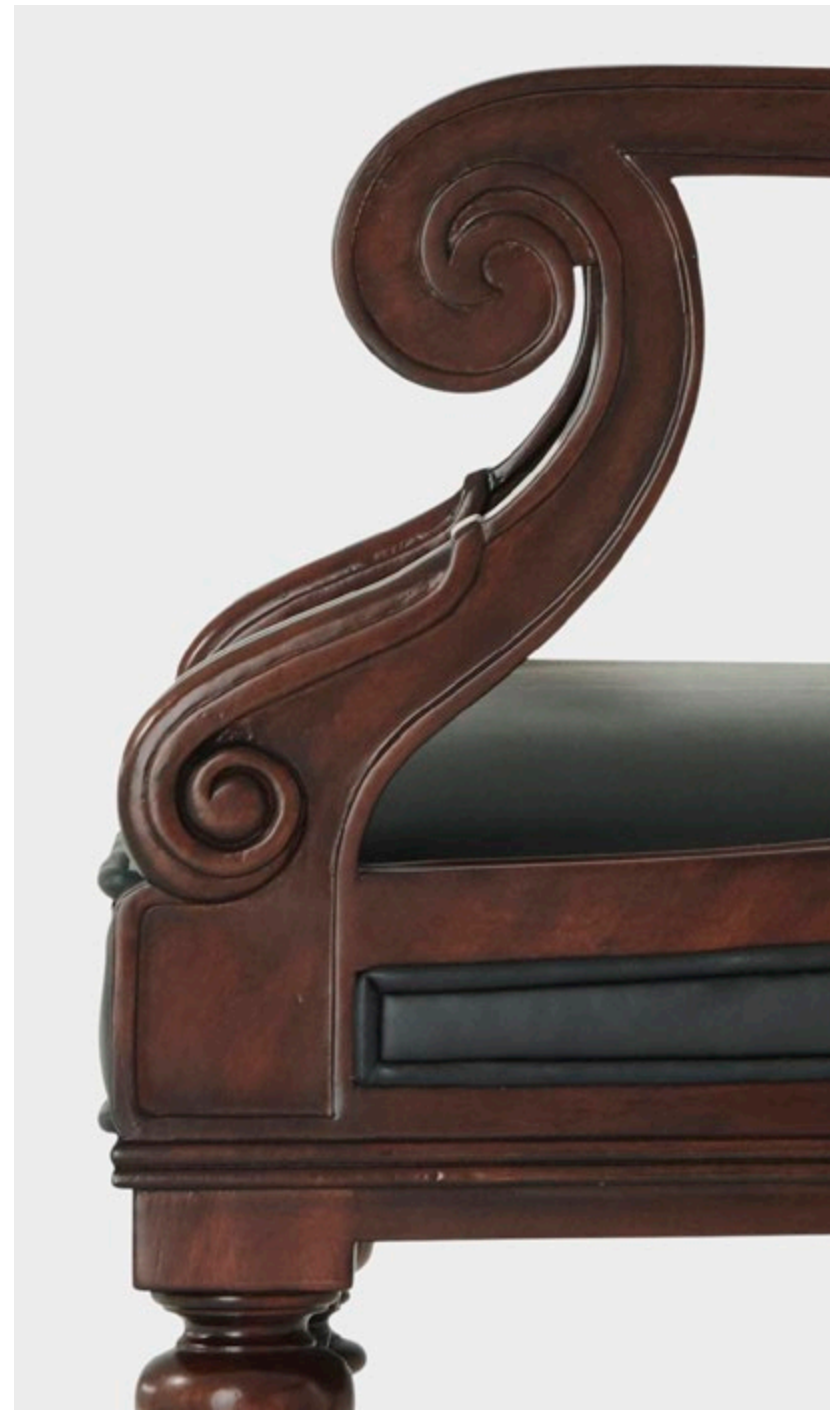
A carved mahogany, flame mahogany veneered and parcel gilt wall mirror, the arched broken swan neck crest with a carved moulding and centred by a spiral carved pine cone finial, the rectangular bevelled edge mirror below framed by a bound reed slip with swag carving above and a leaf carved pendant apron below.

Inspired by the George III bed in the India silk Room, circa 1760.

37¾ x 3¾ x 62 in | 96 x 9.8 x 157.5 cm



DINING TABLES
AND CHAIRS





AL54031
SUNDERLAND DINNER PARTY

A fine mahogany and flame veneered extending dining table, the rectangular reeded edge top with rounded corners crossbanded in chestnut burl and morado, with two additional self storing leaves, above a mahogany apron, on two baluster turned pedestals each issuing four downswept legs terminating in finely leaf cast brass cappings.

Open: 144 x 48 x 30 in | 365.8 x 122 x 76.2 cm
Closed: 96 x 48 x 30 in | 243.8 x 122 x 76.2 cm



AL40087
FLORIS

A hand carved mahogany scoop back dining chair, the panelled and upholstered back above an upholstered seat, on turned and reeded legs. Inspired by a Regency original.

22½ x 25½ x 36½ in | 57 x 65 x 93 cm
Seat height: 19 in (48 cm)



AL41087
FLORIS ARMCHAIR

A hand carved mahogany scoop back dining armchair, the panelled and upholstered back above an upholstered seat flanked by scroll arms, on turned and reeded legs. Inspired by a Regency original.

24½ x 25½ x 36½ in | 62 x 65 x 93 cm
Seat height: 19 in (48 cm) | Arm height: 25¾ in (65 cm)

AL54014
LAVINIA'S SUPPER PARTY

A Morado and pollard banded circular dining table, with a carved edge and four frieze drawers with brass handles, the hexagonal column issuing outswept reeded legs on castors.

48 x 48 x 30 in | 121.92 x 121.92 x 76.2 cm



AL54009
THE ALTHORP PATENT JUPE TABLE

A circular extending mahogany dining table crossbanded with burl and Morado, the top is formed of eight pull - out triangular segments with inset fold out leaves to expand the table, raised on a bold turned pillar with a hexagonal base with concave sides and outswept legs with finely cast brass cappings and disc feet.

Open: 78 x 78 x 30 in | 198.12 x 198.12 x 76.2 cm
Closed: 62½ x 62½ x 30 in | 158.75 x 158.75 x 76.2 cm



AL40088
DALTON

A hand carved mahogany scoop back dining chair, the panelled and double caned back above an upholstered seat, on turned and reeded legs. Inspired by a Regency original.

22½ x 25½ x 36½ in | 57 x 65 x 93 cm
Seat height: 19 in (48 cm)



AL40802
THE SEDDON SIDE CHAIR

A mahogany dining chair, the shaped waisted back with serpentine uprights above an upholstered seat, on elegant moulded cabriole legs terminating in spade feet. The original very large set designed by George Seddon circa 1800.

20¼ x 24¼ x 38½ in | 51.44 x 61.6 x 97.79 cm



AL41019
LAVINIA'S ARMCHAIR

An ebonised and parcel gilt open armchair, the overscrolled back centred by a painted rectangular panel, with a caned and cushion seat, the cushions in blue silk hand-embroidered with coronets, on a Greek key seat rail and on ring turned tapering . The original Regency, circa 1820.

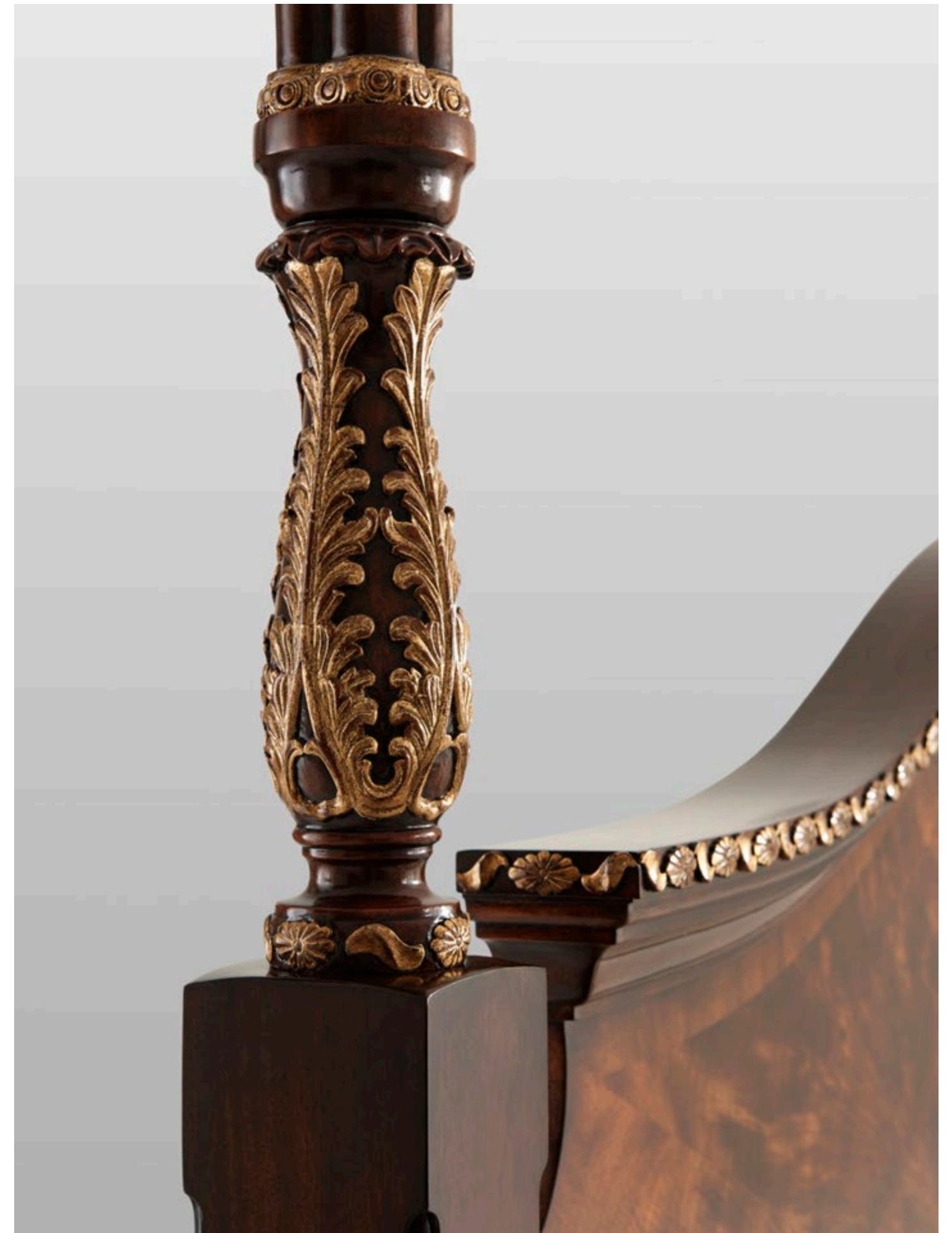
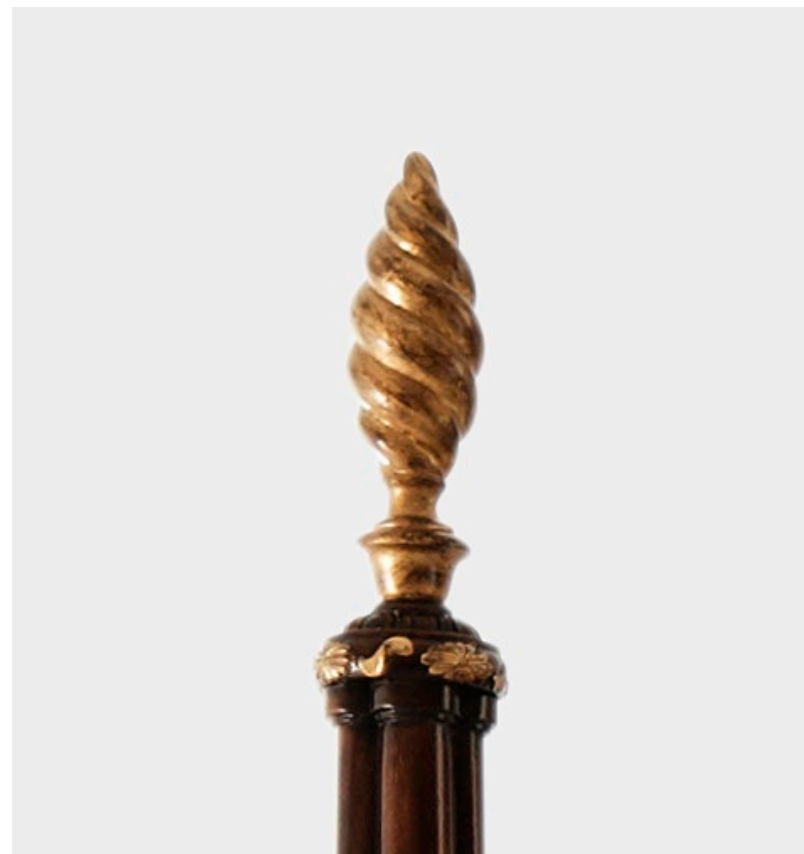
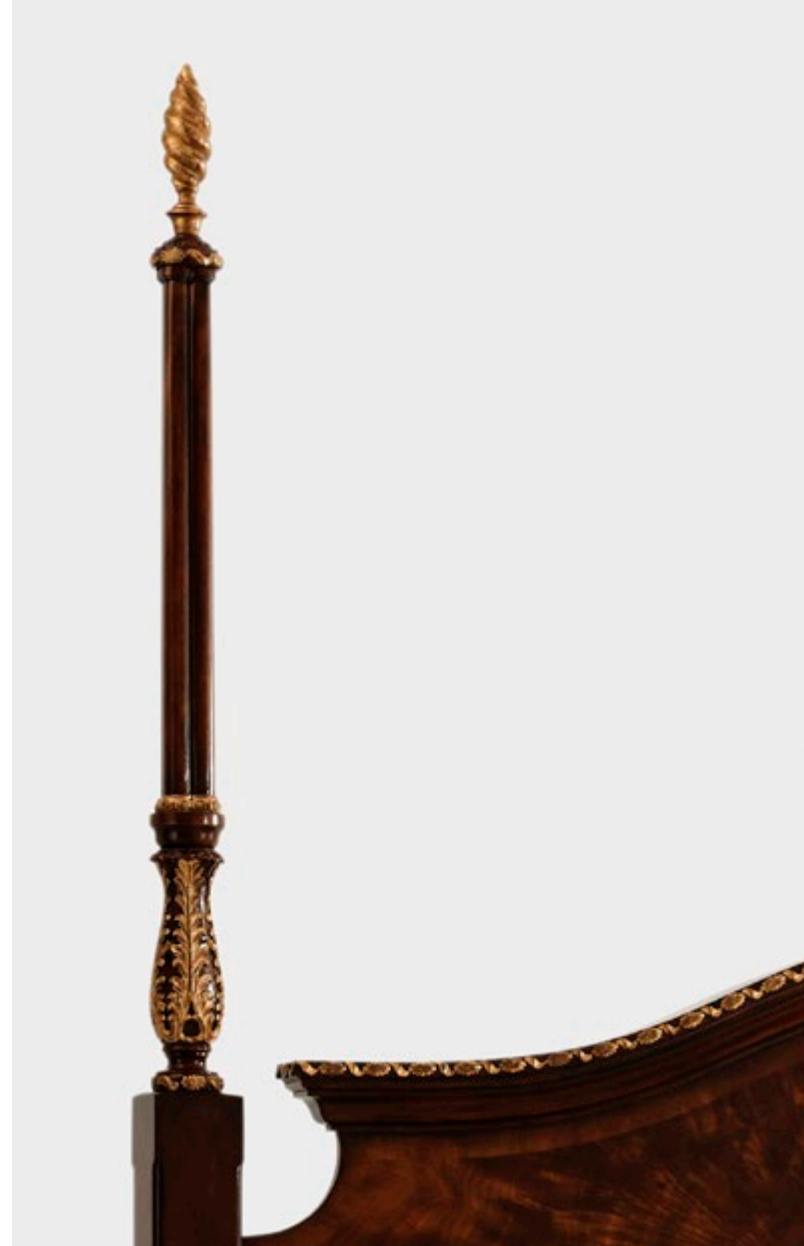
23½ x 24½ x 36 in | 59.69 x 62.23 x 91.44 cm



AL41043
THE SEDDON ARMCHAIR

A mahogany dining armchair, the shaped waisted back with serpentine uprights above an upholstered seat, on elegant moulded cabriole legs terminating in spade feet. The original very large set designed by George Seddon circa 1800.

26 x 25 x 38 in | 66.04 x 63.5 x 96.5 cm



BEDS



AL83010
THE INDIA SILK BED

A carved mahogany, flame veneered and parcel gilt four poster King Bed, the arched headboard with a carved cornice and finely carved acanthus leaf carved baluster and cluster columns with spiral carved pine cone finials.
The original George III, circa 1760 in the India Silk Room.

86 x 88¼ x 97¼ in | 218.4 x 224 x 247 cm

The India Silk bedroom is tucked away in a peaceful corner of the house with beautiful views of the gardens below. The name of the bedroom derives from the silk bedspread that has traditionally been used here. The bed was made in 1923 using original Georgian posts from circa 1760, found in the brew house.

AL20105L
EDMUND LEFT TABLE LAMP

A finely cast brass and mahogany table lamp, with a mottled green stone paneled and mahogany plinth bases embellished with the Spencer coat of arms, surmounted by a seated Griffin and a pagoda shade, the shade with a fine Spencer coat of arms finial.

9½ x 8½ x 24½ in | 24 x 21.5 x 62.23 cm



AL20105R
EDMUND RIGHT TABLE LAMP

A finely cast brass and mahogany table lamp, with a mottled green stone paneled and mahogany plinth bases embellished with the Spencer coat of arms, surmounted by a seated Griffin and a pagoda shade, the shade with a fine Spencer coat of arms finial.

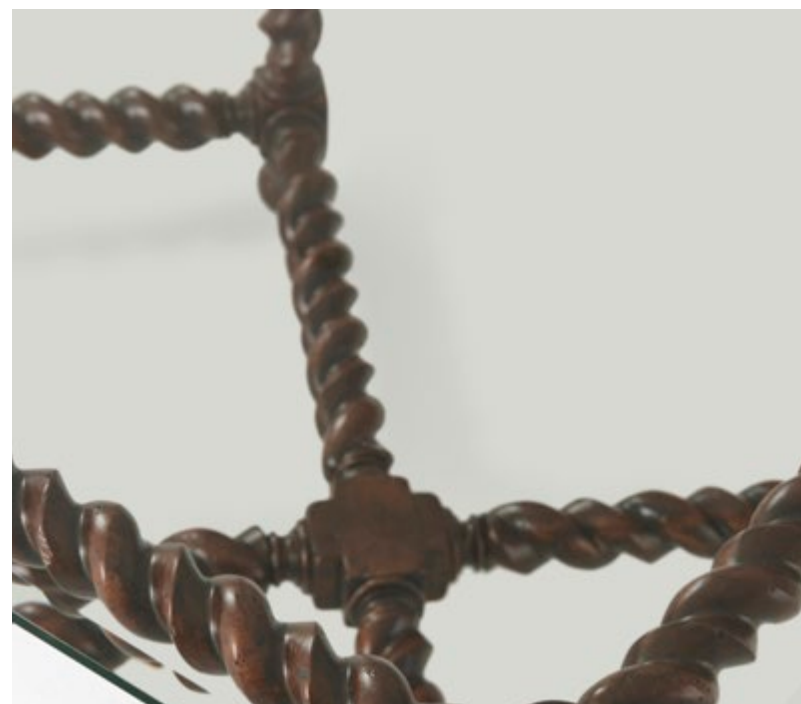
9½ x 8½ x 24½ in | 24 x 21.5 x 62.23 cm



THE PRINCESS OF WALES BEDROOM

In 1863, the future King Edward VII and his wife, Alexandra, the Princess of Wales, visited the Red Earl (Fifth Earl Spencer), at Althorp. They slept in this room, hence its name. Most of the furniture surrounding the opulent bed is Georgian. The original pattern of the fabric on the four-poster was designed in 1911. The most soulful portrait in the room is by the Spanish court painter, Murillo, of a young princess. There is also a picture of a lady that looks similar to the Mona Lisa, by the School of Leonardo da Vinci.







AL51055
CLIVE COCKTAIL TABLE

A rustic oak cocktail table with glass top, on six oak spiral leg joined with spiral "X" stretcher.

57 x 32 x 17¾ in | 144.8 x 81.3 x 45.1 cm



AL51041
VICTORY OAK COCKTAIL

A reclaimed oak and figured ash veneered refectory cocktail table, the rectangular planked and breadboard top above a figured ash apron, on turned legs and block feet joined by plain stretchers. Inspired by a 17th century refectory table.

63 x 38 x 20 in | 160 x 96.5 x 50.8 cm



AL51044
LODGE COCKTAIL TABLE

A mahogany and reclaimed oak occasional 'Joynt' cocktail table, the planked rectangular top with a moulded edge, above a panelled frieze with gently splayed turned legs terminating in block feet joined by a planked tray undertier. Inspired by a 17th century 'Joynt' stool.

54 x 30 x 19 in | 137.16 x 76.2 x 48.26 cm

AL50161
OAK CLOVER

A mahogany and reclaimed oak 'Clover' table, the trefoil top above a triangular frieze and Cricket base, on three turned and block legs joined by board stretchers. Inspired by a 17th century original.

24½ x 23 x 27 in | 62.23 x 58.42 x 68.58 cm



AL50157
LAWN CRICKET

A reclaimed oak veneered and mahogany cricket table, the circular planked top with a raised edge, on three splayed tapering legs joined by a triangular undertier. Inspired by a 17th century original.

26 x 26 x 26¼ in | 66.04 x 66.04 x 66.65 cm



AL50159
BUTLER'S ACCENT

A reclaimed oak veneered and mahogany accent table, the planked top with a raise edge, above a frieze drawer and baluster turned legs joined by an undertier, on bun feet. Inspired by a Charles II occasional table, circa 1630.

30 x 20 x 26 in | 76.2 x 50.8 x 66.04 cm



AL50190
BERNARD END TABLE

A rustic oak veneered end table with chamfered carved edge top featuring a spiral leg column joined with spiral stretcher.

24 x 24 x 24¼ in | 60.9 x 60.9 x 61.5 cm



AL50191
LUCY SIDE TABLE

A rustic oak veneered side table featuring a square moulded leaf carved top and round leaf carved shelf joined with four turned baluster legs.

14½ x 14½ x 24 in | 37 x 37 x 61 cm

AL50160
LODGE TABLE

A mahogany and reclaimed oak occasional 'Joynt' table, the planked rectangular top with a moulded edge, above a panelled frieze with gently splayed turned legs terminating in block feet joined by a planked tray undertier. Inspired by a 17th century 'Joynt' stool.

28 x 20 x 24 in | 71.12 x 50.8 x 60.96 cm





AL50162
SILAS' SIDE TABLE

A mahogany and reclaimed oak side table, the rectangular planked and breadboard top above a moulded frieze, on bobbin turned and block legs joined by a boarded tier and bobbin stretchers below.

Inspired by an late 17th century table.

31½ x 20 x 27 in | 80.17 x 50.8 x 68.58 cm



AL50163
SILAS' SERVING TABLE

A mahogany and reclaimed oak veneered serving table, the galleried top and undertaker with glass overlay, on spiral turned legs joined by an undertier fitted with two drawers, on turned legs with brass castors.

Inspired by a 17th century serving table.

42 x 20 x 35¼ in | 106.68 x 50.8 x 90.8 cm



AL53052
THE HUNT TABLE

A mahogany and reclaimed oak Serving or 'Hunt Table', the rectangular top with two fold-down leaves resting on lopers pulling from the apron, with two frieze drawers, on spiral turned legs with bun feet joined by wavy X stretchers. Part of the Althorp Living History 'Victory Oak' collection, this table is inspired by a William & Mary original from around 1690.

Open: 67 x 32 x 30 in | 170.18 x 81.28 x 76.2 cm

Closed: 67 x 16 x 31 in | 170.18 x 40.64 x 78.74 cm



AL53069
JEANNE CONSOLE TABLE

A rustic oak veneered console table featuring an oval moulded edge top with rope moulding on turned legs joined with a floral trefoil pierced stretcher.

54 x 17 x 33¼ in | 137.2 x 43.2 x 84.5 cm



AL53068
FARLEY CONSOLE TABLE

A solid oak and reclaimed oak veneered console table, the planked and molded edge top with a bracketed apron, on six slender turned and tapered legs with reeded decoration, terminating in bronzed cappings and castors. Inspired by a William IV writing table at Althorp.

68 x 16 x 36 in | 172.72 x 40.64 x 91.45 cm



AL53048
VICTORY OAK CONSOLE

A reclaimed oak and figured ash console table, the planked rectangular moulded edge top above a figured ash veneered apron frieze with a drawer, on octagonal tapering legs and bun feet joined by a concave fronted stretcher. Inspired by an early 18th century original.

48 x 18 x 33 in | 122 x 45.7 x 83.8 cm



AL53051
WEST GATE CONSOLE

A mahogany and reclaimed oak console table, the bowfront top above a plain frieze and corner brackets, on tapering legs terminating in brass castors. Inspired by a George II provincial serving table.

72½ x 20 x 34 in | 184.15 x 50.8 x 86.36 cm

AL50153
VICTORY OAK END TABLE

A reclaimed oak and figured ash veneered accent table, the planked rectangular moulded edge top above two short and one long drawer, the Gothic arched apron on bell turned legs joined by a wavy X stretcher.
Inspired by a William & Mary original.
32 x 19 x 28 in | 81.3 x 48.3 x 71 cm



AL50127
TALBOT BARREL

An antiqued wooden barrel, the circular top above planked sides bound by hand-forged iron riveted straps and hand painted with the Spencer coat of arms.
Inspired by Frederick Spencer (4th Earl Spencer),
14th April 1798 – 27th December 1857.
18 x 18 x 28 in | 45.7 x 45.7 x 71.1 cm



AL71041
OCCASION

A reclaimed oak and mahogany trestle desk, the planked rectangular top above a frieze with three recessed panel drawers, on turned column splayed end supports secured by iron stretchers.
Inspired by a 17th century Continental original.
52 x 24 x 30 in | 132.08 x 60.96 x 76.2 cm



AL53053
CARTER CONSOLE

A mahogany and reclaimed oak veneered console table restored with pollard oak, the rectangular three quarter gallery top with six turned finials atop each turned leg, with two frieze drawers and a similar undertier below, on turned legs.
64 x 16 x 35¼ in | 162.56 x 40.64 x 89.53 cm





AL54057
EMORY DINING TABLE

A drop leaf dining table featuring an oval rustic oak veneered top on four spiral columns joined by chipped carved stretcher. When leaves are dropped, this lovely piece can be used as a large console table.

91½ x 46 x 30 in | 232.4 x 116.8 x 76.2 cm
91½ x 26 x 30 in | 232.4 x 66.2 x 76.2 cm



AL54036
VICTORY OAK REFECTORY

A reclaimed oak veneered refectory table, the planked rectangular moulded edge top above vase column supports and bases joined by a long stretcher. Inspired by a 17th century English original.

92 x 40 x 30 in | 233.7 x 101.5 x 76.2 cm





AL54037
VICTORY OAK JUPE

A reclaimed oak and chestnut burl restored circular extending dining table, the segmented top opening to reveal six self storing fold out leaves above a plain frieze, on a vase column support and crossover refectory feet. Inspired by a 17th century oak tavern table and an extending Jupe table circa 1830.

Open: 56 x 56 x 30 in | 142.2 x 142.2 x 76.2 cm
Closed: 47¾ x 46¾ x 30 in | 121.3 x 118.7 x 76.2 cm



Also available
AL54038
VICTORY OAK JUPE II

Open: 72 x 72 x 30 in | 183 x 183 x 76.2 cm
Closed: 54 x 54 x 30 in | 137 x 137 x 76.2 cm



AL40092
VICTORY OAK LADDERBACK SIDE CHAIR

An oak ladder back side chair, the bow arched bars between turned supports, above a hand woven faux rush seat, on turned legs with pad and ball feet. Inspired by an 18th century English original.

20½ x 22 x 41 in | 52 x 56 x 104 cm
Seat height: 19¼ in (49 cm)



AL41092
VICTORY OAK LADDERBACK ARM CHAIR

An oak ladder back armchair, the bow arched bars between turned supports, above a hand woven faux rush seat, on turned legs with pad and ball feet. Inspired by an 18th century English original.

22¼ x 24½ x 42¼ in | 56.5 x 62 x 107 cm
Seat height: 19¼ in (49 cm)
Arm height: 25 in (63.5 cm)



AL83022
NASEBY US KING BED

A reclaimed oak veneered and mahogany tester King bed, with an arched headboard and four turned columns on a paneled foot rail, on turned legs.

85¼ x 88½ x 80½ in | 216.53 x 224.8 x 204.47 cm



AL60048
HAYWOOD CHEST

A solid oak and reclaimed oak veneered chest of drawers, the planked top above two short and three long recessed bevel edge drawers with bronze finish drop handles, with recessed panel sides on short bracket feet. Inspired by a George II original at Althorp.
46 x 20 x 36 in | 116.84 x 50.8 x 91.45 cm



AL60049
AXEL CHEST OF DRAWERS

A rustic oak veneered chest of drawers featuring a moulded oak top above two short and three long beveled edge drawers with bronze finished pendant handles on a planked base with tapered block feet.
50 x 19 x 42 in | 127 x 48.3 x 106.7 cm

AL61099
LLEWELLYN CHEST

A solid oak and reclaimed oak veneered pedestal cabinet, the planked top and sides enclosing parquetry doors further enclosing an adjustable shelf, on a bold plinth base. Inspired by the pedestals in the Painters' Passage at Althorp.
40½ x 19 x 36 in | 102.9 x 48.26 x 91.45 cm



AL61098
HAZEL CHEST

A solid oak and reclaimed oak veneered cabinet, the rectangular planked top and sides, two multiple step paneled doors with an outer border of egg & dart carving and further bands of acanthus and bell-flower carving; each door centered by a bronzed ring pull, on lobed bun feet raise on turned tapering feet; the interior with one adjustable shelf. Inspired by a Regency domed top chest at Althorp.
52 x 22 x 32 in | 132.08 x 55.88 x 81.3 cm

AL60050
OLIVER BEDSIDE TABLE

A rustic oak veneered bedside table featuring a moulded oak top above a frieze drawer and cabinet door with bronze finished pendant handles and finely turned feet.

26 x 18 x 28 in | 66 x 45.7 x 71.1 cm



AL60046
NASEBY NIGHTSTAND

A reclaimed oak and mahogany veneered nighthstand with Bellied Drawer Faces, shaped top, and with four finely turned legs. Designed with Oil rubbed Escuthcheons, and pull drawers.

34 x 20 x 32 in | 86.36 x 50.8 x 81.3 cm



AL61100
GODWIN SIDEBOARD

A rustic oak veneered sliding door sideboard. The rectangular top features a gentle moulded edge resting over two corbel columns and two chamfered sliding doors enclosing two drawers and an adjustable shelf. All of this rests upon a moulded base raised on four turned feet.

72 x 20 x 33 in | 182.9 x 50.8 x 83.8 cm



AL60047
NASEBY DRESSER

A reclaimed oak and mahogany Veneered with bellied drawer faces, a shaped top, bold pilaster supported by six finely turned legs. Designed with oil rubbed escutcheons and pull drawers.

72 x 20 x 44 in | 182.9 x 50.8 x 111.8 cm

THE SALOON AND THE SPENCER GALLERY

This grand, central, hallway was once an open courtyard, where visitors to the house would arrive and dismount their horses. In 1662, it was roofed over by the widow of a Spencer who fought in the English Civil War. The imposing oak staircase was built in 1666 – it used to be painted white. The stairs are surprisingly shallow and delightfully uneven – a physical manifestation of the long history of the house. In the Victorian age, this was the first room to be adapted to electricity. The Chandeliers light up the moulded ceiling, which is inspired by the extraordinary one next door, in the Wootton Hall.



ACKNOWLEDGEMENTS

Althorp® Living History™
© Charles, Earl Spencer, 2006

DESIGN
TA International Services Co., Limited
PRODUCT AND ADDITIONAL LOCATION
PHOTOGRAPHY
Alderman Company
LOCATION PHOTOGRAPHY
The Wootton Hall, The Saloon,
The Marlborough Room, The South Drawing Room,
The Picture Gallery, The Oak Bedroom and Althorp House
© Althorp 2004,
Alec Jolly
PORTRAIT PHOTOGRAPHY
Foreword: Earl and Countess Spencer
Alderman. The Complete Picture
PRINTING
Oxford Graphic, Singapore, 2006
Typeset in Optima and Gill Sans Light.
Published by Theodore Alexander 2006
AL05/2006

Many of the designs and the design elements within the Althorp® Living History™ collection are the subject of pending patent applications.

Veneer and solid wood exhibits individual characteristics of the timber from which it was cut and while every effort is made to reproduce accurately the colour of the furniture illustrated there may be some variations in grain pattern and colour. Natural colour changes may also occur with age in the materials used, particularly in leather, wood and veneer.

As part of our environmental policy this collection is produced from plantation Acacia and Mahogany.

Dimensions quoted are approximate and Theodore Alexander reserves the right to alter specifications in the interest of improved quality and design.

ALTHORP®
L I V I N G H I S T O R Y™

By Paul Maitland International Inc.
trading as Theodore Alexander under license from
The Right Honourable The Earl Spencer

GENERAL

Items included in this Catalog may not be represented in the Theodore Alexander showroom.
Each of the unique items featured in this Catalog are the subject of copyright protection in the United States and throughout the world.

Some items in this Catalog may not be available in certain Region or Country.

APPEARANCE

All Theodore Alexander products are manufactured to the highest standards and with the utmost care and attention to detail. Whilst we make every effort to accurately reproduce the colours of the furniture illustrated, differences in texture, grain and colour are inherent in all natural woodwork and should be expected as the individual characteristics of materials used. Variations in these qualities are not manufacturing defects and will not be accepted as such for the purpose of claims. Some changes in colour or texture may occur during the life cycle of the product, particularly in leather, wood and veneer.

All exposed surfaces of Theodore Alexander furniture are prepared, sanded and finished, even though at times they are not visible. This includes the undersides, the back and the inside of the drawer boxes amongst others.

While our fabrics and leather are sourced from the finest upholstery manufacturers, we are unable to provide a guarantee on fabrics or leather, including COM. Theodore Alexander can take no responsibility for wearability of fabric and leather or alternations to the fabrics and leather after it has shipped. We recommend the use of a professional upholstery dry cleaner in case of soiling or wear.

Items are photographed in studio conditions and the appearance of the actual items may vary from that shown

DIMENSION, SPECIFICATIONS AND STYLE

All dimensions listed are approximate given the hand crafted nature or our product and the variation in fabrics used. There may be a difference of up to 2” from listed dimensions.

When giving overall dimensions we may use some rounding.

Product specifications are not binding and we reserve the right to make changes without notice. Please refer to your shipment for final sizes and specifications.

Where descriptions refer to particular historical styles, this does not indicate the product stems from this period in any aspect other than in design inspiration.

INTELLECTUAL PROPERTY

We are proud of the unique designs created by our skilled designers and craftsmen. To protect your investments, infringements of any proprietary (trademarked, patented, copy righted or otherwise protected) design or right will be pursued to the full extent of the law. We will take legal action against any person and / or company that knowingly or unknowingly infringes upon our intellectual property rights. Trademarks, collection names, design and design elements in the Catalog may be the subject of pending and issued copyrights, trademark registrations and patents.

All images and text contained in this Catalog are the sole property of Theodore Alexander or its subsidiaries and may not be use or reproduced in any medium without the expressed written consent of Theodore Alexander.

PRODUCT CARE

To learn more about caring for your furniture, visit our care page on theodorealexander.com



THEODORE ALEXANDER