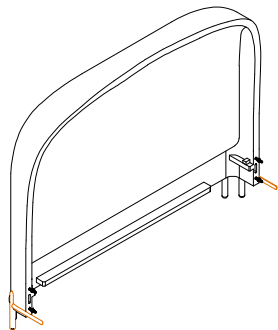


P1

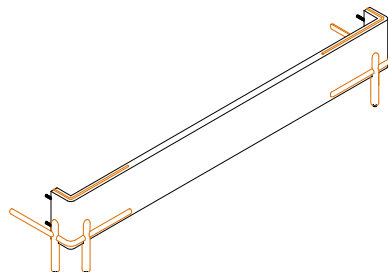
Headboard



x 1

P2

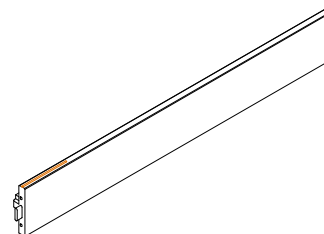
Footboard



x 1

P3

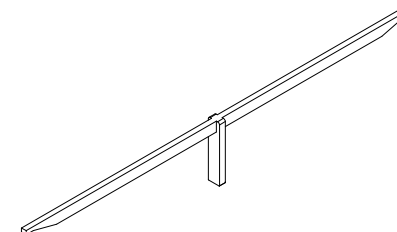
Side rail



x 2

P4

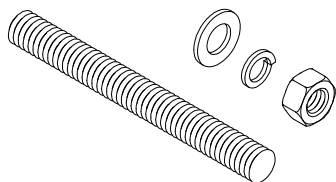
Center support



x 2

01

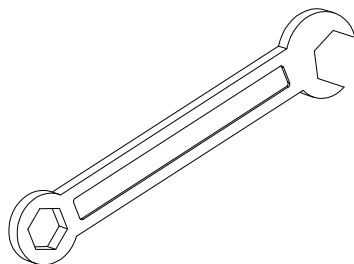
Thereadedds steel , Hexagonal
nut , Lock& Flat washer



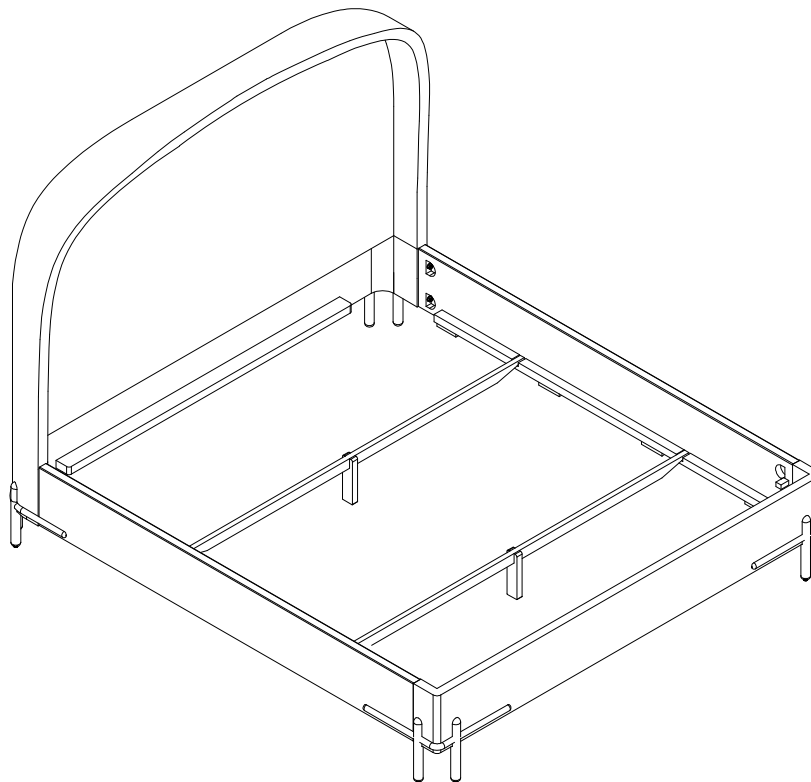
x 8

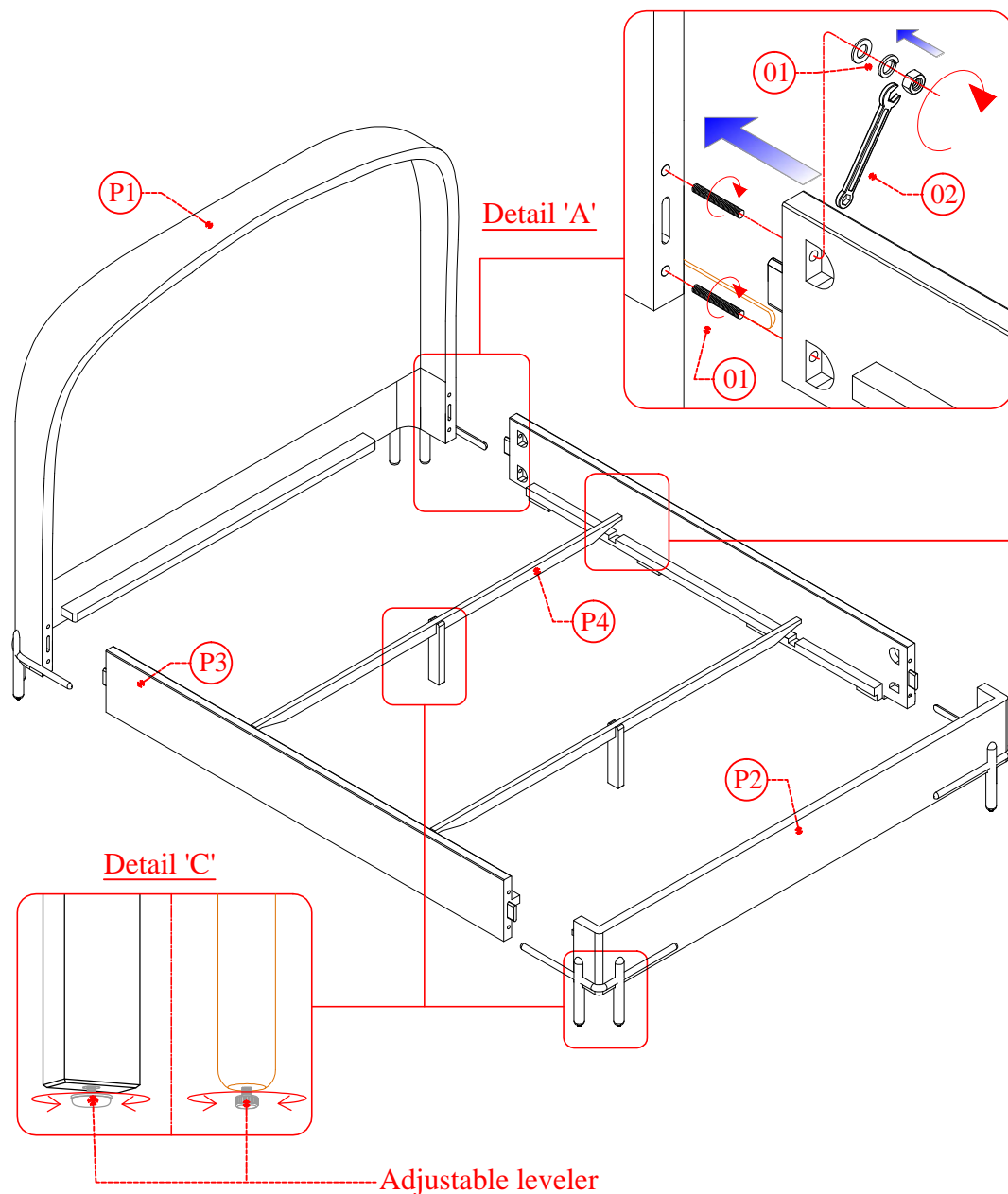
02

Steel open wrench



x 1





INSTRUCTIONS :

1. Insert the steel threads on headboard (P1) and footboard (P2).
2. Assemble the side rail (P3) to the headboard (P1) and footboard (P2), then insert hexagonal nuts , Lock & Flat washers, use steel open wrench to turn clockwise direction securely, refer **Detail 'A'**.
3. Insert the center support rail (P4) to the pre-cut at the side Rail, refer **Detail 'B'**.
4. Adjust all the glider for levelling if necessary. Refer **Detail 'C'**
5. Item is ready to use.

