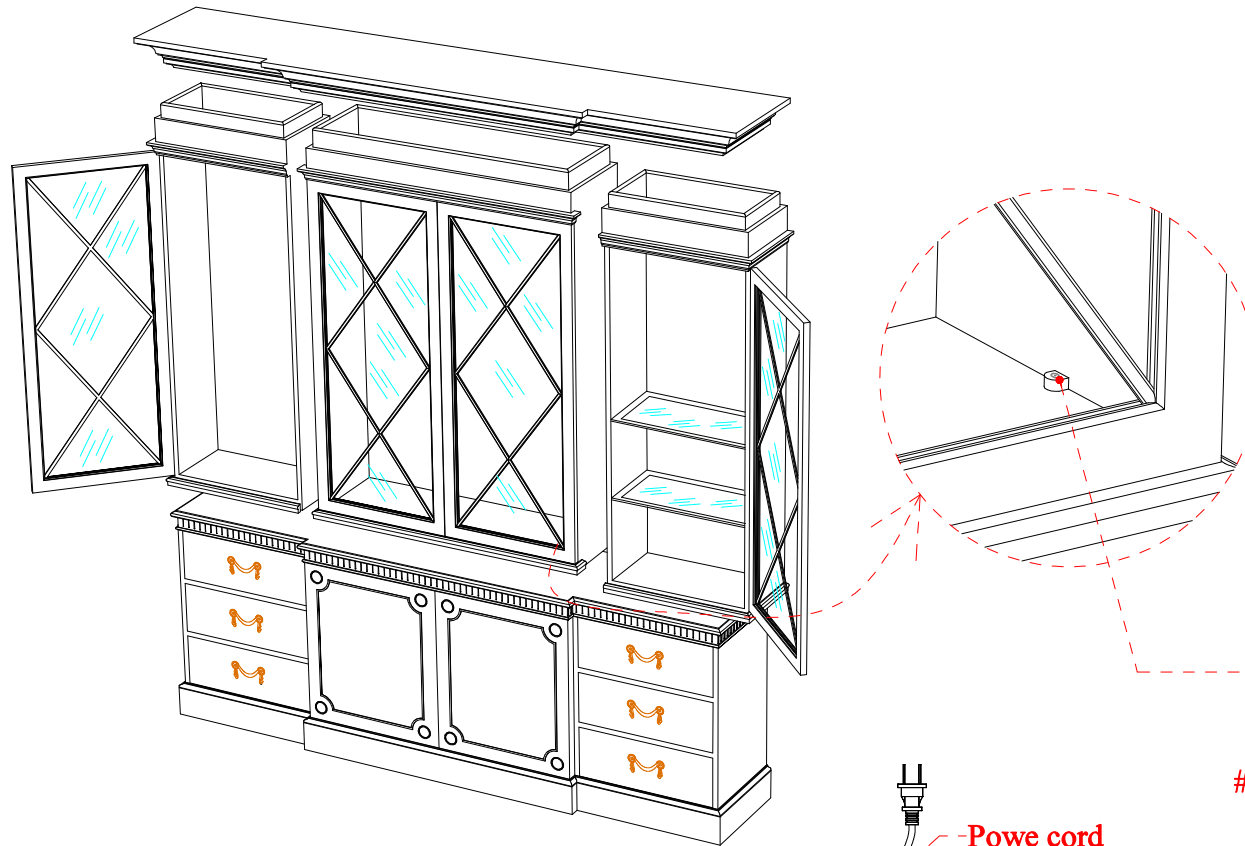


AL63004

ASSEMBLY INSTRUCTION

Page: 1/5
Date: 03-Oct-2022

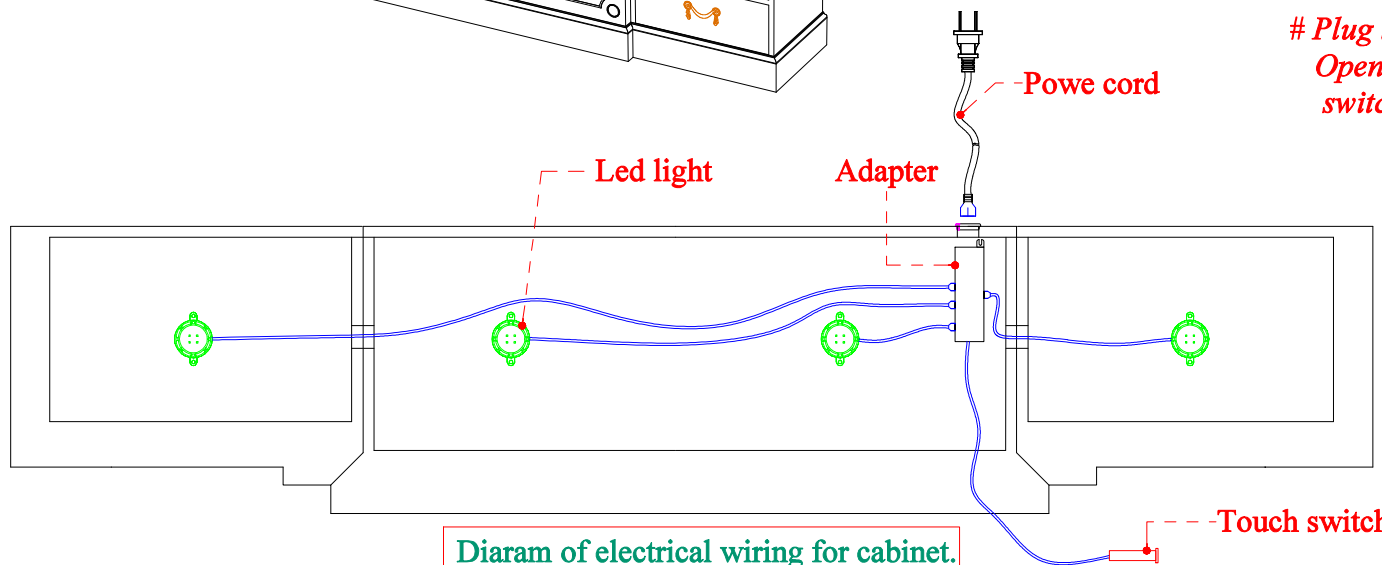


PACKING LIST

No.!	Name of Item	Q'ty	U/M
1	P1: Top cover	01	pc
2	P2: Upper side cabinet	02	pcs
3	P3: Upper center cabinet	01	pc
4	P4: Base	01	pc
5	P5a: Wooden shelf frame (side)	06	pcs
6	P5b: Glass shelf (side)	06	pcs
7	P6a: Wooden shelf frame (center)	03	pcs
8	P6b: Glass shelf (center)	03	pcs
9	P7: Wooden shelf (base)	01	pc

Touch on switch to turn
ON/OFF the light switch

Plug the power cord to the adapter and outlet.
Open the door of upper-center cabinet, you see the touch
switch, touch on switch to turn ON/OFF the light.



1. At least four people are required to assemble this piece of furniture.
2. When assembling the furniture make sure that you are working on a flat floor.

AL63004

ASSEMBLY INSTRUCTION

Page: 3/5
Date: 03-Oct-2022

ANTI TIP KIT INSTALLATION INSTRUCTION

1. Pre-set the furniture against the wall on your desire location. Mark with pencil location of the anti tip kit bracket on the wall. The anti tip kit wall bracket should be near the center position of the furniture top back edge, measured approximately 1" from top back edge of the furniture.
2. Remove the furniture then attach an anti tip kit bracket to center position of the furniture top panel back side or the solid under top back rail (if the solid under top back rail is available). Use the shorter screws. See FIGURE 1.
3. Connect the steel cable to the anti tip kit bracket on the furniture as illustration in FIGURE 2.
4. On the location that you have marked on the wall, attach the second anti tip kit bracket to the wall by using the longer screws as illustration in FIGURE 3. **WE DO NOT RECOMMEND TO ATTACH THE ANTI TIP KIT WALL BRACKET TO THE DRY WALL WITHOUT STUDS. IT SHOULD BE ATTACHED INTO A WALL STUD OR CONCRETE WALL.**
5. Set the furniture against the wall again and connect the steel cable to the anti tip kit wall bracket. Refer to FIGURE 4.

FIGURE 1

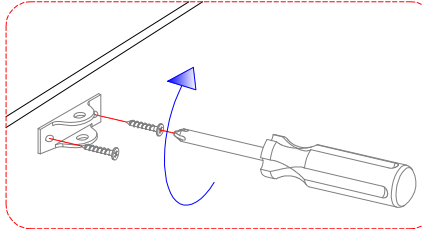


FIGURE 2

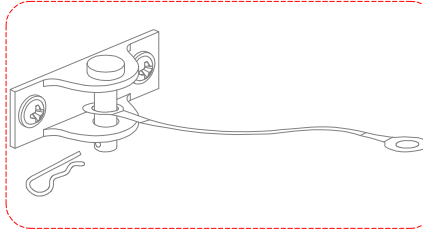


FIGURE 3

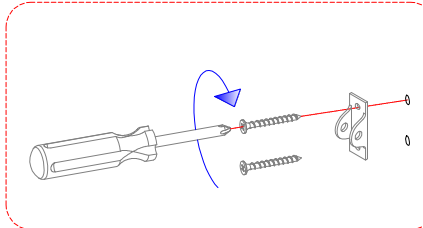
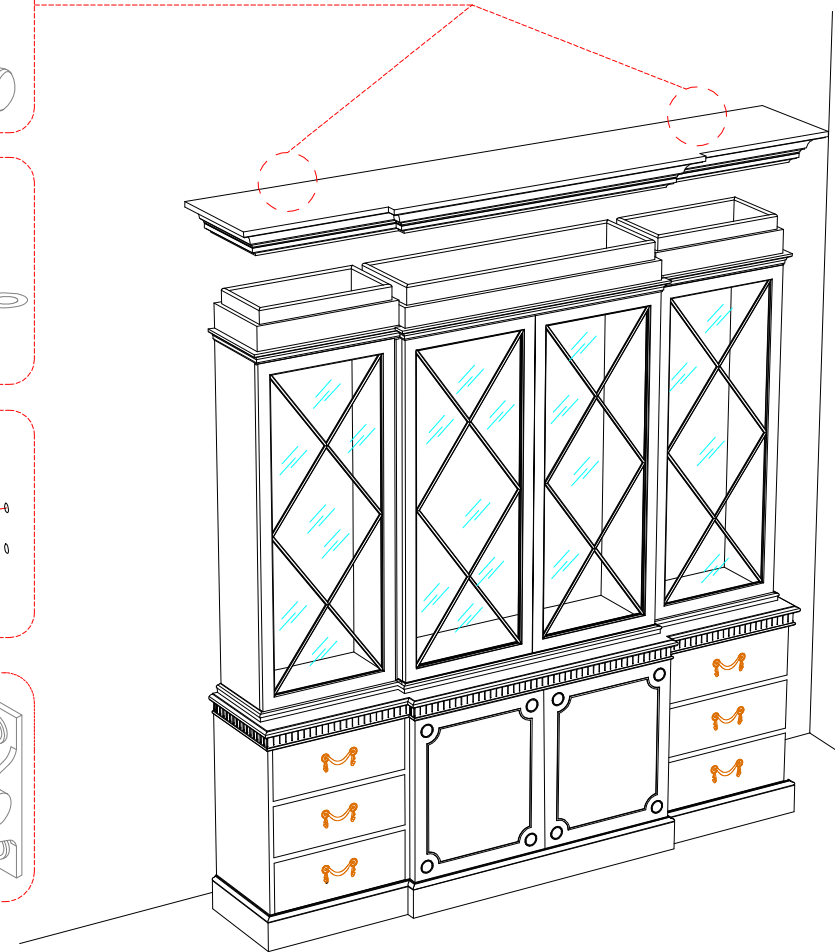
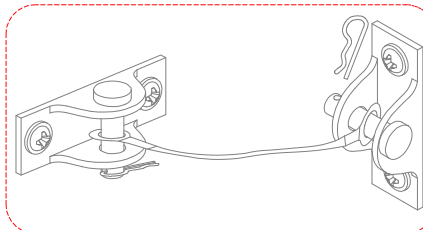


FIGURE 4

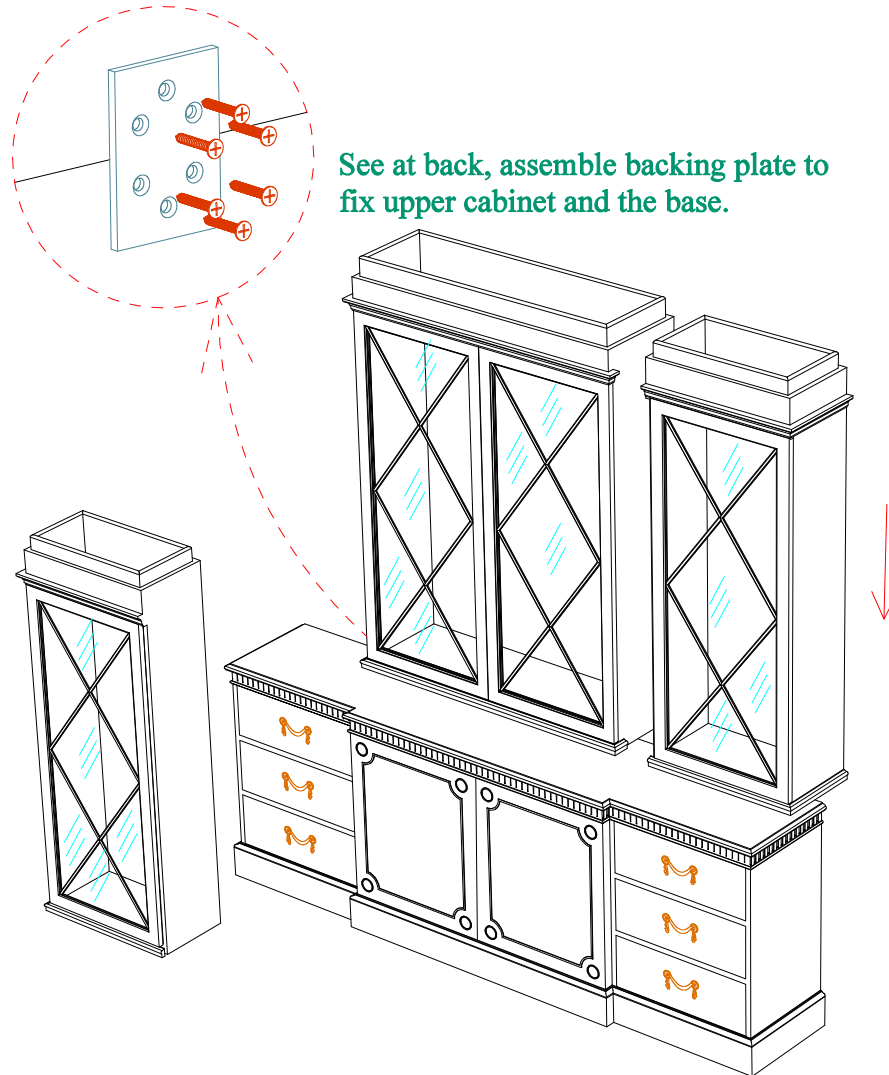


AL63004

ASSEMBLY INSTRUCTION

Page: 2/5
Date: 03-Oct-2022

03. Lift the upper side, middle cabinet onto the accompanying base
04. Attach the cabinet to the base.
05. Assemble cover top on upper cabinet assemble anti-tip kit on top cover to the wall.

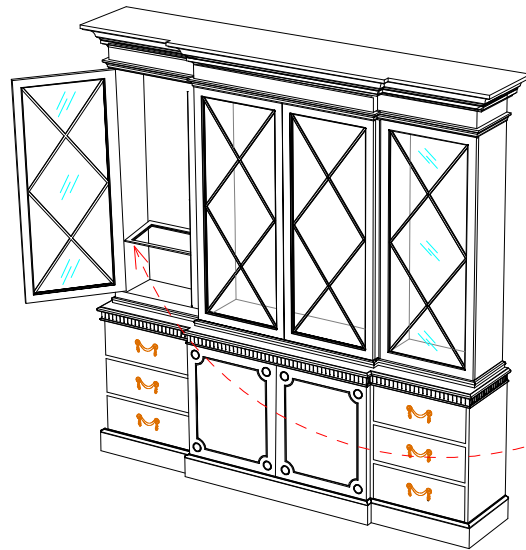


AL63004

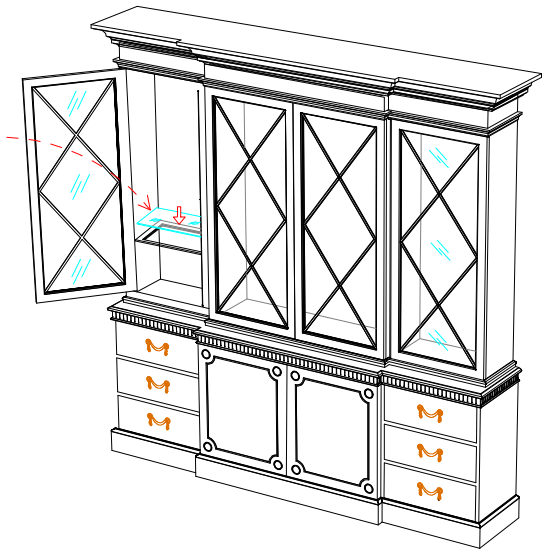
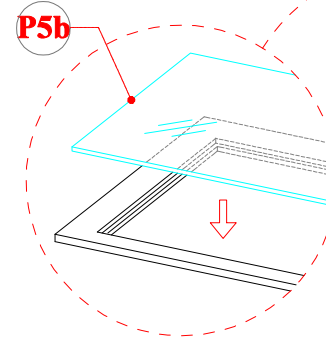
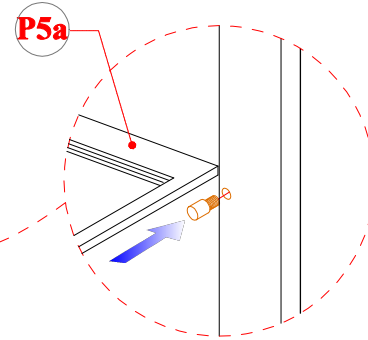
ASSEMBLY INSTRUCTION

Page: 4/5
Date: 03-Oct-2022

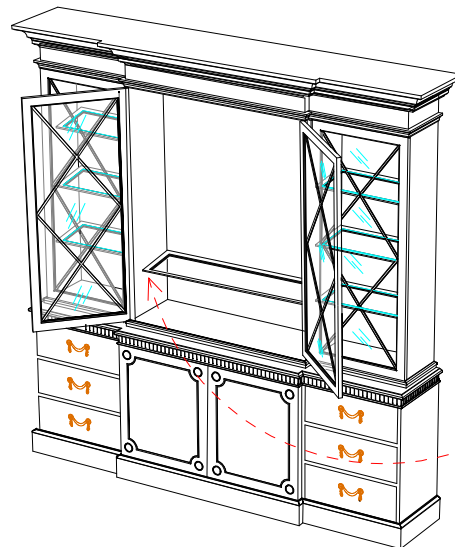
Step1:



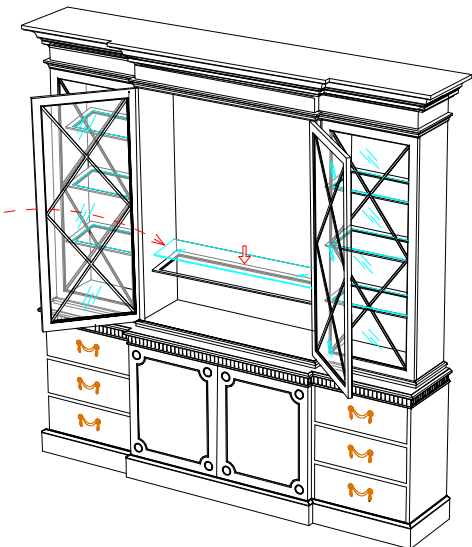
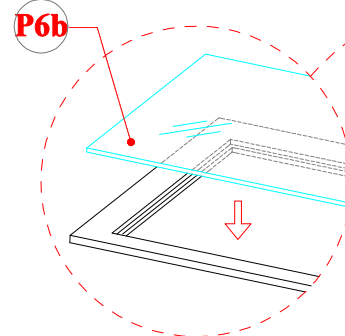
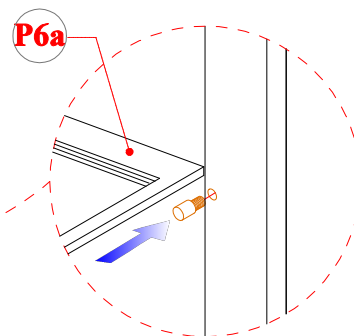
1. Open the side cabinet door.
2. Assemble the wooden shelf frame with the shelf support pin.
3. Put the glass shelf on top of the wooden shelf frame. Next, assemble the remaining shelves and glass in turn.



Step2:



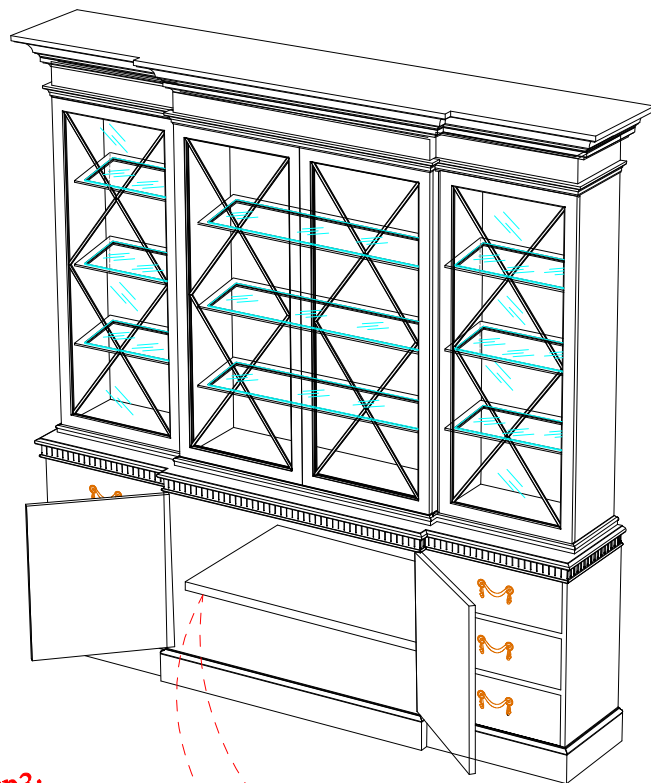
4. Open the middle cabinet door.
5. Assemble the wooden shelf frame with the shelf support pin.
6. Put the glass shelf on top of the wooden shelf frame. Next, assemble the remaining shelves and glass in turn.



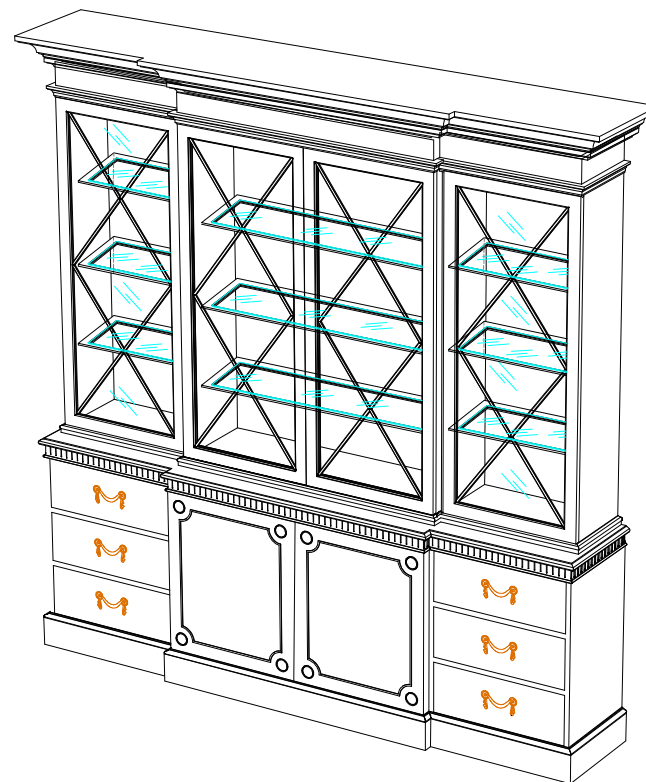
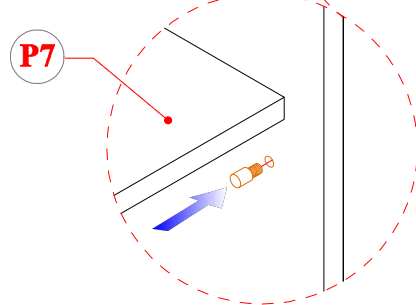
AL63004

ASSEMBLY INSTRUCTION

Page: 5/5
Date: 03-Oct-2022



Step3:



7. Open the base cabinet middle door.
8. Assemble the shelf panel with the shelf support pin.
9. Finished. Item is aready to use.