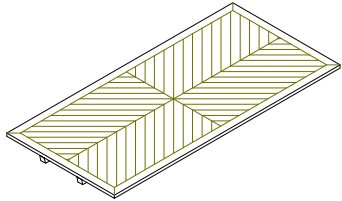


# TAS54082

## ASSEMBLY INSTRUCTION

**P1**

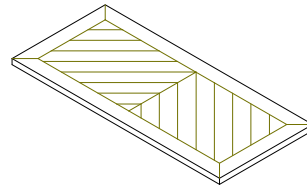
**Table Top**



**x 1**

**P2**

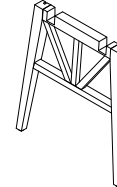
**Leaf Top**



**x 2**

**P3**

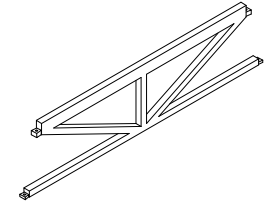
**Frame Leg**



**x 2**

**P4**

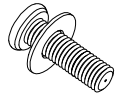
**Support Leg**



**x 1**

**01**

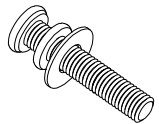
**Short allen bolt & washer**



**x 2**

**02**

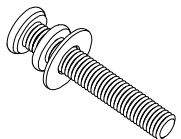
**Middle allen bolt, lock & washer**



**x 2**

**03**

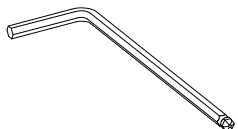
**Long allen bolt, lock & washer**



**x 4**

**04**

**Steel allen wrench**

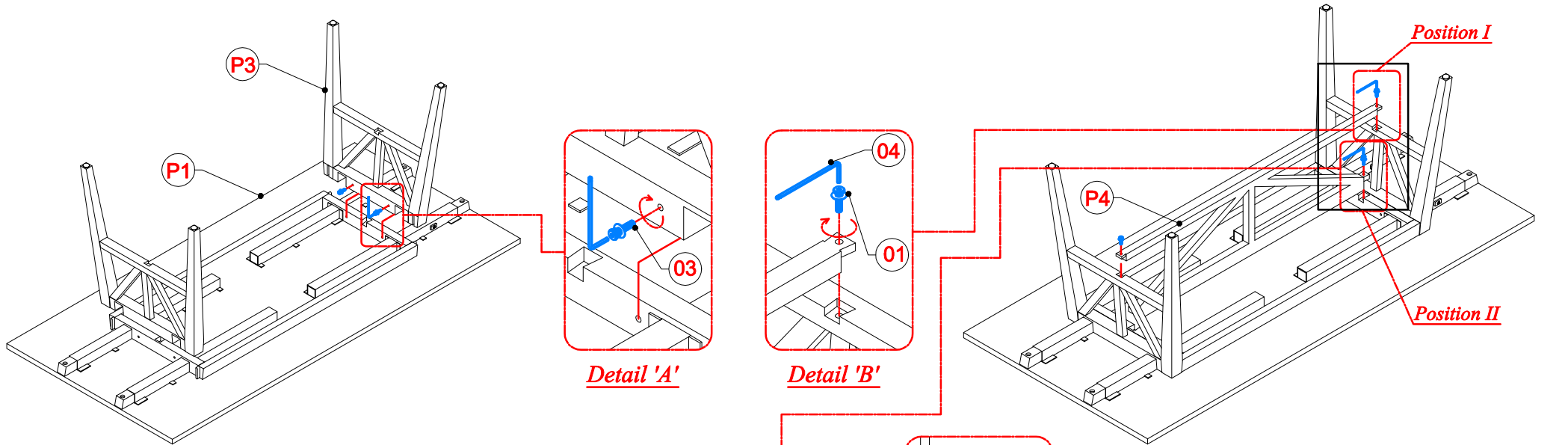


**x 1**



# TAS54082

## ASSEMBLY INSTRUCTION



### INSTRUCTIONS :

1. Turn the table top (P1) upside down and put it on a soft face
2. Assemble the frame leg (P3) to the table top (P1) then insert long allen bolt, lock & washer (3), use steel allen wrench (4) and turn clockwise direction to tightened them. Refer detail 'A'
3. Put the support leg (P4) to the leg frame (P3), at 'position I' insert short allen bolt & washer (1), at 'position II' insert middle allen bolt, lock & washer (2), use steel allen wrench (4) and turn clockwise direction to tightened them. Refer detail 'B,C'
4. Turn the table upright. Slide 4 support rail to the stopper And the set the 2 leaves onto the support rail. After that slide the support rail back to the main to for lock the leaves. Then fasten the rail with the pre-installed thumb screws underneath the table top. Refer detail 'D'
5. Item is ready to use. (Adjust glider for the table levelling if necessary, Refer detail 'E'.)

