

THEODORE ALEXANDER

TRADITIONAL





LIVING ROOM	04
DINING ROOM	38
BEDROOM	54
OFFICE	64
ACCENTS	70

A close-up photograph of a dark-stained wooden cabinet or chest of drawers. The image focuses on the ornate brass hardware, including a large central knob and decorative pulls. The wood grain is visible, and the brass has a polished, aged appearance. A white text box is overlaid on the upper right portion of the image.

LIVING ROOM



5005-530
Turquoise Encounter

A pollard burl and turquoise stone inlaid lamp table, the square moulded edge and crossbanded top above a panelled frieze drawer, the turned legs joined by an undertier.

26 x 26 x 27 in (66.04 x 66.04 x 68.58 cm)



5105-216
Turquoise Encounter Cocktail

A pollard burl and turquoise stone inlaid cocktail table, the square moulded edge top above a stone panelled frieze with three frieze drawers to two sides, the turned legs joined by a concave sided undertier. The original 19th century French.

52 x 52 x 20¼ in (132.08 x 132.08 x 51.75 cm)



5005-392
In the Grand Manner

A flame veneered and solid mahogany lamp table, the serpentine square brass bound top above a shaped frieze drawer with finely cast brass Rocaille handle, on square tapering and fluted legs applied with roundels and joined by a serpentine brass bound undertier.

26¼ x 26¼ x 27 in (66.68 x 66.68 x 68.58 cm)



5105-160
A Regal Cocktail Table

A flame veneered and solid cocktail table, the serpentine brass bound top above two drawers on each side centred by a leather inset slide drawer with a concealed drawer, all with brass Rocaille handles, on square tapering, fluted legs joined by a serpentine brass bound undertier.

56 x 36 x 20¼ in (142.24 x 91.44 x 51.12 cm)



5305-142
A pollard burl and turquoise stone inlaid console table

A pollard burl and turquoise stone inlaid console table, the rectangular moulded edge top above a stone panelled frieze with three drawers, the turned legs joined by a two pollard oak shelves.

68 x 15 x 35 in (172.72 x 38.1 x 88.9 cm)



7105-128
Academia

A mahogany and flame veneered bureau plat desk, the serpentine brass bound top above five drawers creating a kneehole, on square fluted legs.

55 x 30 x 30 in (139.7 x 76.2 x 76.2 cm)



5006-003
Tosca 'Marlborough Gold' Accent (Round)
 Accent Table
 Flame Veneered & Crossbanded Top
 'Marlborough' Finish with Brass Line Inlay
 'Marlborough Gold' Leafed Paneled Frieze and Legs
 Crossbanded Undertier & Tapering Legs.
 24 x 24 x 28 in (60.96 x 60.96 x 71.12 cm)



5006-006
Tosca 'Malborough Gold' (Square)
 Accent Table
 Flame Veneered & Crossbanded Top
 'Marlborough' Finish with Brass Line Inlay
 'Marlborough Gold' Hand Leafed Paneled Frieze and Legs
 Bowed Frieze Drawer with Brass Handle
 Square Tapering Legs
 26 x 26 x 26 in (66.04 x 66.04 x 66.04 cm)



5105-436
Tosca 'Malborough Gold' Cocktail
 Cocktail Table
 Flame Veneered & Crossbanded Top
 'Marlborough' Finish with Brass Line Inlay
 'Marlborough Gold' Hand Leafed Paneled Frieze and Legs
 Bowed Frieze Drawer / Square Tapering Legs
 58 x 34 x 20 in (147.32 x 86.36 x 50.8 cm)



5305-349
Tosca 'Marlborough Gold' Console
 Console Table
 Flame Veneered & Crossbanded Top
 'Marlborough' Finish with Brass Line Inlay
 'Marlborough Gold' Hand Leafed Paneled Frieze and Legs
 Bowed Frieze Drawer / Square Tapering Legs
 57 x 20 x 34½ in (144.78 x 50.8 x 87.63 cm)



5005-217
Corinthian Columns

A flame veneered and mahogany lamp table, the square top above a fluted frieze and a hand worked 'bronzed' repoussé panel drawer, each corner applied with brass paterae, on Corinthian capital and turned fluted legs joined by a concave sided and crossbanded undertier, on turned feet.

26 x 26 x 27 in (66 x 66 x 68.6 cm)



5005-219
Flames in Corinth

A flame veneered and mahogany lamp table, the circular top above a fluted frieze and a hand worked 'bronzed' repoussé panel drawer, on Corinthian capital and turned fluted legs joined by a concave sided trefoil undertier, on turned feet.

26 x 26 x 30 in (66 x 66 x 76.2 cm)



5105-071
Classical Gathering

A mahogany and flame veneered cocktail table, the square top with breakfront sides, the floral repoussé brass panel frieze and three drawers to two sides interspersed with flowerhead paterae and fluted sections, on brass capital fluted legs joined by a concave sided and reeded edge undertier. Inspired by a Louis XVI original.

52 x 52 x 19¾ in (132.1 x 132.1 x 50.2 cm)



Detail of 5005-219



5105-072
Classical Meet

A mahogany and flame veneered cocktail table, the rectangular top above a floral 'bronzed' repoussé panel frieze with two end drawers interspersed with flowerhead paterae and fluted sections, on brass capital fluted legs joined by a concave sided and reeded edge undertier. Inspired by a Louis XVI original.

42 x 32 x 20 in (106.7 x 81.3 x 50.8 cm)



3100-095
Le Salon

A mahogany and repoussé 'bronzed' brass mounted breakfront overmantle wall mirror, with fluted Corinthian columns flanking rectangular mirror plates. Inspired by a Louis XVI original.

45 x 4 x 52¼ in (114.3 x 10.2 x 132.7 cm)



5105-325

Stratfield

A mahogany and flame veneered cocktail table, the brass line and cast brass moulding inlaid top with re-entrant rounded corners, the ebonised line inlaid frieze above ring turned and tapering legs joined by an undertier and terminating in finely cast brass feet.

54 x 32 x 20¼ in (137.2 x 81.3 x 51.5 cm)



6105-495

Nonpareil

A flame veneered, Morado banded and brass line inlaid side cabinet, the moulded edge top inset with relief brass moulding and with rounded re-entrant corners, above one frieze drawer and a lockable cabinet door enclosing an adjustable shelf, on delicately turned legs with finely cast feet.

30 x 13 x 32 in (76.2 x 33 x 81.3 cm)



Detail of 6105-495



5005-879

Regency Tiers

A finely parquetry veneered two tier accent table, the top and undertier veneered in Morado, Satinwood, Figured Eucalyptus and Yew Burl on delicate ebonised and reeded mahogany supports with finely cast brass accents, on castors.

23½ x 23½ x 28½ in (59.69 x 59.69 x 72.39 cm)



5305-327

Regency Tiers Console

A finely parquetry veneered two tier console table, the top and undertier veneered in Morado, Satinwood, Figured Eucalyptus and Yew Burl on delicate ebonised and reeded mahogany supports with finely cast brass accents and feet.

53½ x 14½ x 36½ in (135.9 x 36.83 x 92.7 cm)

5005-461
Galleried Appeal

A pollard oak burl and mahogany tripod lamp table, fine swag cast brass gallery, octagonal ebonised column, brass mounted outswept legs. The original Victorian.

24¼ x 24¼ x 28 in (61.6 x 61.6 x 71.12 cm)



5005-867
Edgeworth

A Morado and satinwood veneered accent table, the oval moulded edge top with a floral oval penwork detail inlay, above a crossbanded frieze and on ebonised and gilt ring turned mahogany splayed legs terminating in finely cast brass feet, joined by a concave sided undertier. The top pivoting to reveal storage underneath.

28 x 18 x 25 in (71.12 x 45.72 x 63.5 cm)



5005-927
Matlock Table

A wild Morado veneered, ebonised, gilt and satinwood banded occasional table, the circular top with protruding rounded corners, above a paper twist inlaid edge, the frieze drawer and gilt spiral turned capitals above ebonised and gilt ring turned splayed legs with brass cappings joined by a concave sided undertier.

28 x 28 x 26 in (71.12 x 71.12 x 66.04 cm)



Detail of 5005-867

5005-792

Matlock

A wild Morado veneered, ebonised, gilt and satinwood banded occasional table, the rectangular top with protruding rounded corners, above three drawers and gilt spiral turned uprights, on ebonised and gilt ring turned splayed legs with brass cappings joined by a concave sided undertier.

24 x 16 x 28 in (61 x 40.5 x 71 cm)



5305-326

Matlock Console

A wild Morado veneered, ebonised, gilt and satinwood banded occasional table, the rectangular top with protruding rounded corners, above three drawers and gilt spiral turned uprights, on ebonised and gilt ring turned splayed legs with brass cappings joined by a concave sided undertier.

60 x 13 x 34 in (152.4 x 33.02 x 86.36 cm)



5105-138

The Galleried Cocktail Table

An flame veneered, burl veneer inlaid and mahogany cocktail table, the oval top with two opposing end drawers, verdigris brass handles and a gallery to the concave undertier, on turned and fluted legs.

42 x 32 x 20 in (106.68 x 81.28 x 50.8 cm)

5005-866
Bowlas

A swirl mahogany veneered, Morado and satinwood banded accent table, the top with rounded corners and cast brass moulding, above a panelled and banded frieze with a drawer, on reeded column supports with finely cast brass bases on a Morado veneered open stretcher with canted corners, on outswept legs with brass cappings.

25 x 25 x 26 in (63.5 x 63.5 x 66 cm)



5105-359
Alderley

A swirl mahogany veneered, Morado and satinwood banded cocktail table, the top with rounded corners and cast brass moulding, above a panelled and banded frieze with a drawer to one side, on reeded columns with brass bases on a Morado veneered open stretcher with canted corners, on outswept legs with brass cappings.

54 x 34 x 20 in (137.2 x 86.5 x 50.8 cm)



Detail of 5305-337



5305-324
Shirley Console

A fine Etimoe quarter veneered console table, the serpentine top crossbanded in sycamore and Morado with a fan inlaid centre, the banded frieze with three drawers between fan inlaid reeded club leg capitals, the legs terminating in acanthus cast brass feet.

56 x 14 x 34 in (142.24 x 35.56 x 86.36 cm)



5305-337
Shirley Narrow Console

A fine Etimoe quarter veneered console table, the serpentine top crossbanded in sycamore and Morado with a fan inlaid centre, the banded frieze with a drawer between fan inlaid reeded club leg capitals, the legs terminating in acanthus cast brass feet.

36 x 14 x 32 in (91.44 x 35.56 x 81.28 cm)



5105-413
Shirley Cocktail

A fine Etimoe quarter veneered cocktail table, the serpentine top crossbanded in sycamore and Morado with a fan inlaid centre, the banded frieze with two drawers opposing a central drawer between fan inlaid reeded club leg capitals, the legs terminating in acanthus cast brass feet.

56 x 36 x 20 in (142.24 x 91.44 x 50.8 cm)



5005-828
Claydon Table

A fine swirl mahogany and satinwood crossbanded occasional table, the oval moulded edge top above a panelled frieze with a concealed drawer, the turned and reeded tapering legs with oval satinwood inset recessed panel capitals, terminating in reeded brass feet. Inspired by a Regency original.

26 x 18 x 25 in (66 x 45.7 x 63.5 cm)



5105-340
Claydon Cocktail

A fine swirl mahogany and satinwood crossbanded cocktail table, the oval moulded edge top centred by a satinwood inlaid oval, above a panelled frieze with a concealed drawer to one side, the turned and reeded tapering legs with oval satinwood inset recessed panel capitals, terminating in reeded brass feet. Inspired by a Regency original.

48 x 28½ x 20 in (122 x 72.5 x 50.8 cm)



5305-273
Claydon Console

A fine swirl mahogany and satinwood crossbanded demi lune console table, the moulded edge top above a panelled frieze, the turned and reeded tapering legs with oval satinwood inset recessed panel capitals, terminating in reeded brass feet. Inspired by a Regency original.

60 x 15 x 34 in (152.5 x 38 x 86.5 cm)



Detail of 5305-273



5005-871
Donwell Accent Table

A mahogany veneered and satinwood strung accent table, the break-bowfront sides with a brass inlaid edge above a frieze drawer and yew burl veneered corner panels, on reeded supports joined by a swirl mahogany and satinwood banded undertier, on fluted peg feet with brass cappings.
25 x 25 x 25 in (63.5 x 63.5 x 63.5 cm)



5305-290
Donwell Console

A mahogany veneered and satinwood strung console table, the break-bowfront top with a brass inlaid edge above two frieze drawers and a yew burl veneered concealed drawer and corner panels, on reeded supports joined by a swirl mahogany and satinwood banded undertier, on fluted peg feet with brass cappings.
60 x 15 x 34 in (152.4 x 38.1 x 86.36 cm)



6005-529
Eliza

An oval flame veneered nightstand or accent chest, the satinwood banded and brass inlaid edge top above a veneered slide and three drawers with Greek key stringing, on a line strung plinth base.
28 x 19 x 28 in (71.12 x 48.26 x 71.12 cm)



5105-361
Donwell Cocktail

A mahogany veneered and satinwood strung cocktail table, the breakfront sides and 'D' end top with a brass inlaid edge above two frieze drawers and a concealed centre drawer in yew burl veneer, on reeded supports joined by a swirl mahogany and satinwood banded undertier, on fluted peg feet with brass cappings.
54 x 34 x 20 in (137.15 x 86.36 x 50.8 cm)



5000-465BD
Louis XVI library

A faux book panel circular lamp table, verdigris brass mounts, aged brown leather top and undertier, drawer and cabinet, turned fluted legs. The original Louis XVI.
24 x 24 x 28 in (60.96 x 60.96 x 71.12 cm)



6000-017BD
A hand carved and gilt faux book chest of drawers

A hand carved and gilt faux book chest of drawers, four spine front drawers, on bun feet. The original Victorian.
25 x 19 x 26 in (63.5 x 48.3 x 66 cm)



5052-009
Piano Nobile

A mahogany and silvered verre églomisé bowfront chest, the drawers and panelled sides with gilt decoration of trailing vines, the flame veneered top above fluted stiles enclosing two shaped drawers applied with brass handles, on square tapering legs on brass plinth feet.
27¼ x 20 x 27 in (69.22 x 50.8 x 68.58 cm)



5052-011
Waterside

A mahogany and silvered verre églomisé panelled lamp table, the square brass bound top with rounded protruding corners, the two panelled frieze drawers and sides with gilt decoration of trailing vines, on turned and fluted, tapering legs terminating in brass cappings. The original Louis XVI.
24 x 24 x 27 in (60.96 x 60.96 x 68.58 cm)



5100-048BD
William and Mary's Cocktail Book

A hand carved cocktail table, faux book spine carved frieze with two opposing drawers and a leather inset top, verdigris brass roundels, spiral turned legs, 'x' stretcher. The original William and Mary.
44 x 34 x 18¼ in (111.76 x 86.36 x 46.51 cm)



5105-173
Cocktails at Versailles

A flame veneered oval cocktail table, the verre églomisé gilt and silvered frieze and two drawers on square tapering legs with brass feet and joined by an undertier.
58 x 38 x 20 in (147.32 x 96.52 x 50.8 cm)



5005-442
Bernadette
 A fine mahogany and Morado crossbanded lamp table, applied with very fine brass mounts, the brass bound circular top and undertier with protruding corners and a frieze drawer, on cabriole legs.
 26¼ x 26¼ x 29 in (66.68 x 66.68 x 73.66 cm)



5105-178
A Capital Cocktail Table
 A mahogany and Morado banded cocktail table applied with very fine brass mounts, the brass bound circular top with protruding corners, the frieze with two opposing drawers, on ram's head capital cabriole legs joined by an undertier.
 38¾ x 38¾ x 20¼ in (98.74 x 98.74 x 51.12 cm)



5005-355
Around in Circles
 A mahogany and brass bound lamp table, the circular top above a frieze drawer, on inswept splay legs with sabots, joined by a brass bound undertier.
 20 x 20 x 28 in (50.8 x 50.8 x 71.12 cm)



5105-158
Around in Circles Cocktail
 A mahogany oval cocktail table, with a brass bound flame veneered top and undertier, the top fitted with four leather inset slides, on sabre legs.
 52¼ x 34¼ x 21¼ in (132.72 x 87 x 53.66 cm)



5300-089
Ram's Head Console
 A mahogany, flame veneered and Morado banded console table applied with very fine brass mounts, the brass bound top with a frieze drawer, on ram's head capital cabriole legs with hoof feet joined by an undertier.
 40¼ x 17¼ x 34¼ in (102.24 x 43.82 x 86.68 cm)



Detail of 5005-355



5005-761
The College Table

A mahogany, figured elm veneer and Morado crossbanded lamp table, the rectangular top with protruding angular corners and a concave front above a panelled frieze with one drawer, above panelled Morado veneered legs joined by an undertier, on square tapering legs with brass feet.

24 x 20 x 26 in (61 x 50.8 x 66 cm)



5105-312
Conyngham

A mahogany, figured elm veneer and Morado crossbanded cocktail table, the rectangular top with protruding angular corners and concave sides above a panelled frieze with two drawers to each side, above panelled Morado veneered legs joined by wavy 'X' stretchers, on square tapering legs with brass feet.

56 x 34 x 20½ in (142.2 x 86.5 x 51.8 cm)



5000-569
Parfait

A marble top mahogany lamp table, the white veined black marble D end top with a three quarter brass gallery on fluted supports joined by a concave sided undertier.

30 x 16¼ x 29 in (76.2 x 41.28 x 73.66 cm)



5105-438
Storyteller Cocktail

Cocktail Table / Brass Bound Breakfront Oval Top Flame Veneered, Crossbanded and Sycamore Strung Top Beveled Glass Inset / 'Marlborough' Finish Frieze above Six Brass Capital & Fluted Legs Joined by a Concave Sided Undertier / Turned Legs with Brass Cappings.

48¼ x 28¼ x 19¼ in (122.55 x 71.75 x 48.9 cm)



5005-342
Paw-Footed

A flame veneered serpentine lamp table, with a frieze drawer, verdigris brass mounts, cabriole legs, paw feet.

24 x 24 x 27 in (60.96 x 60.96 x 68.58 cm)



5105-142
An Outstanding Flame Cocktail Table

A flame veneered and fine verdigris brass mounted serpentine cocktail table, with two opposing end drawers, with rocaille handles and on cabriole legs.

44 x 28 x 20 in (111.76 x 71.12 x 50.8 cm)



5300-136
Victorian Break Bowfront

An flame veneered break bowfront 'Console Dessert' with fine brass mounts, the white veined black marble top above three frieze drawers, the mirror back below before panelled square legs joined by two brass gallery undertiers, on square tapering legs with brass feet.

53 x 17 x 37 in (134.62 x 43.18 x 93.98 cm)



5005-931
Michel-Jean

Accent Table / Mahogany
Granadillo Veneer / Serpentine Moulded Edge Top
Bombe Frieze Drawer Cabriole Legs with Brass Mounts
26½ x 26½ x 26 in (67.3 x 67.3 x 66.04 cm)



5105-393
Michel-Jean Cocktail

Cocktail Table / Mahogany
Granadillo Veneer / Serpentine Moulded Edge Top
Two Opposing Bombe Frieze Drawers
Cabriole Legs with Brass Mounts
54½ x 34½ x 20 in (138.43 x 87.63 x 50.8 cm)



DINING ROOM





4000-787
Gabrielle

A mahogany side chair, the overscroll padded back and seat above floral capital carved and panelled sabre legs. Inspired by a 19th century French original.

23 x 32 x 42½ in (58.5 x 81.3 x 108 cm)

Upholstered in Petham Almond Fabric (1AJK)

Trim: Welting

Seat height: 19½ in (49.5 cm)



4100-787
Gabrielle's Armchair

A mahogany armchair, the overscroll padded back and seat between open scroll arms and above floral capital carved and panelled sabre legs. Inspired by a 19th century French original.

25¼ x 32 x 42½ in (64 x 81.3 x 108 cm)

Upholstered in Petham Almond Fabric (1AJK)

Trim: Welting

Seat height: 19½ in (49.5 cm)

Arm height: 25 in (63.5 cm)



5405-236
Gabrielle's Table

A mahogany and swirl veneered and crossbanded extending dining table, the rectangular top opening to accommodate two additional self storing leaves, the panelled satinwood veneered frieze above a bold base of four turned reeded columns on a platform base issuing four outswept legs with brass cappings.

Open: 132 x 54 x 30 in (335.3 x 137.2 x 76.2 cm)

Closed: 84 x 54 x 30 in (213.50 x 137.20 x 76.20 cm)





4000-866

Atcombe

A finely carved mahogany dining chair, the upholstered framed back with a swirl mahogany veneered scroll over top rail with fine brass details, the upholstered seat on panelled seat rails with turned and fluted legs with splay feet.

21 x 27½ x 41 in (53.3 x 70 x 104 cm)

Upholstered in Petham Almond Fabric (1AJK) / Trim: Welting
Seat height: 19¾ in (50.2 cm)

4100-866

Atcombe Armchair

A finely carved mahogany dining armchair, the upholstered framed back with a swirl mahogany veneered scroll over top rail with fine brass details, the upholstered seat between part padded arms, on panelled seat rails with turned and fluted legs with splay feet.

23½ x 27½ x 41 in (59.7 x 70 x 104 cm)

Upholstered in Petham Almond Fabric (1AJK) / Trim: Welting
Seat height: 19¾ in (50.2 cm) | Arm height: 25½ in (64.8 cm)



6105-436

Donwell Buffet

A fine mahogany veneered and yew burl banded buffet, the break bowfront top with an ebony and brass inlaid edge, above an arrangement of four frieze drawers and central cabinet doors enclosing an adjustable shelf, flanked by two sets of three graduated drawers and turned and tapering columns, on line strung plinth base.

89½ x 22 x 36½ in (227.3 x 56 x 92.7 cm)



5305-222

Brook's Reeded Console

A swirl mahogany and satinwood banded console or serving table, the break bowfront top with an ebony veneered and brass inlaid edge, above five ebonised line strung frieze drawers with angular satinwood panels to the central drawer and corners, on turned and tapering reeded legs terminating in brass reeded feet.

89 x 20 x 36½ in (226.1 x 50.8 x 92.7 cm)



Detail of 4100-782



5405-120

A mahogany circular breakfast / dining table

A mahogany and flame veneered circular breakfast or dining table, the circular top with a brass mounted frieze, on a turned column supports issuing four outswept legs with lion and disc feet.

54 x 54 x 30 in (137.16 x 137.16 x 76.2 cm)



4000-782

Lady Olivia

A mahogany side chair, the overscroll back with a flame veneered top rail above a padded bar, the reeded uprights trailing to an upholstered seat, on recessed panel sabre legs.

22 x 26 x 37½ in (55.9 x 66 x 95.3 cm)

Upholstered in Barley Houndstooth Fabric (1ARP) / Trim: None
Seat height: 19½ in (49.53 cm)



4100-782

Lady Olivia Armchair

A mahogany armchair, the overscroll back with a flame veneered top rail above a padded bar, the reeded uprights trailing to scroll arms on turned supports, the upholstered seat on recessed panel sabre legs.

23½ x 26 x 37½ in (59.7 x 66 x 95.3 cm)

Upholstered in Barley Houndstooth Fabric (1ARP) / Trim: None
Seat height: 19½ in (49.5 cm) / Arm height: 25 in (63.5 cm)



5405-266
Kirkham

A swirl mahogany, satinwood and Morado crossbanded extending dining table, the reeded edge top with one additional leaf, on fluted columns with finely cast brass bases, the concave sided base with satinwood panels, on downswept Morado veneered, line strung and brass inlaid legs with brass rosettes, cappings and castors.

Open: 79 x 39½ x 30 in (200.7 x 100.3 x 76.2 cm)
Closed: 61 x 39½ x 30 in (155.00 x 100.30 x 76.20 cm)



4000-839
Palmerstone's Brass Rosette Dinner Chair

A finely carved mahogany side chair, the shield back with brass rosette corners and a veneered frame, enclosing carved splats, the upholstered seat with a shaped rail on square tapering fluted legs with spade feet. Inspired by a George III original.

19½ x 21¾ x 37½ in (49.5 x 55 x 95.3 cm)
Upholstered in Milborn Cream Fabric (1AFZ)
Trim: Welting
Seat height: 19¼ in (49 cm)



4100-839
Palmerstone's Brass Rosette Dinner Armchair

A finely carved mahogany armchair, the shield back with brass rosette corners and a veneered frame, enclosing carved splats, the upholstered seat between outscrolled arms with a shaped rail on square tapering fluted legs with spade feet. Inspired by a George III original.

23¾ x 21¾ x 38¼ in (60.3 x 55 x 97.2 cm)
Upholstered in Milborn Cream Fabric (1AFZ) / Trim: Welting
Seat height: 19¼ in (49 cm)
Arm height: 25 in (63.5 cm)



6105-487
South Parade Sideboard

A swirl mahogany veneered, satinwood and Morado crossbanded sideboard, the serpentine reeded edge top with protruding rounded corners above three drawers and three further graduated drawers below, all with finely cast brass handles, flanked by two recessed oval panelled cabinet doors, each enclosing an adjustable shelf, with reeded column uprights and turned tapering legs terminating in reeded brass feet.

52 x 17 x 34 in (132 x 43.2 x 86.5 cm)





4000-899
Julienne Chair

Dining Chair
Hand Carved Mahogany with Gibson Finish and gilt details
Cartouche Upholstered Back / Upholstered Seat
Carved Cabriole Legs with Scroll Feet

21 x 26 x 40 in (53.34 x 66.04 x 101.6 cm)

Upholstered in 1552 Fabric (1AQC) / Trim: Welting
Seat height: 19½ in (49.53 cm)

4100-899
Julienne Armchair

Dining Armchair

23½ x 26¼ x 40 in (59.7 x 66.67 x 101.6 cm)
Arm height: 26¼ in (66.67 cm)



6105-565.C021
Julienne Buffet

A fine Granadillo veneered and antique gilt buffet, the serpentine carved edge top above three panelled doors with gilt carved moulding; the rounded uprights with brass acanthus leaf capitals and bases, on turned and gilt legs. The central cabinet enclosing three drawers with brass engraved handles and the side cabinets each enclosing one adjustable shelf.

84 x 22 x 38 in (213.36 x 55.88 x 96.52 cm)



5405-313.C021
Julienne

Extending Dining Table
Granadillo Veneer and Mahogany with Gibson Finish
Crossbanded and Brass Strung Top
Hand Carved and Antique Gilt Moulding with Gilt Highlights
Tapered Panelled Bases with Scroll Legs and Disc Feet

Open: 156 x 52 x 30 in (396.24 x 132.08 x 76.2 cm)
Closed: 108 x 52 x 30 in (274.32 x 132.08 x 76.20 cm)



4000-591
The Raconteur

A fine hand carved and gilt side chair, with a pierced vase splat back above a button upholstered seat on cartouche carved cabriole legs. The original pair of chairs Irish George III, circa 1760 achieved \$112,000 at auction.

24 x 25¼ x 40 in (60.96 x 64.14 x 101.6 cm)
Upholstered in Old English Leather (2ABJ)
Trim: TA Vintage Nails
Seat height: 20½ in (52.07 cm)



4100-517
The Raconteur

A fine hand carved and gilt armchair, with a pierced vase splat back above a button upholstered seat on cartouche carved cabriole legs. The original pair of chairs Irish George III, circa 1760 achieved \$112,000 at auction.

25¼ x 25¼ x 40 in (64.45 x 64.14 x 101.6 cm)
Upholstered in Old English Leather (2ABJ)
Trim: TA Vintage Nails
Seat height: 20½ in (52.07 cm) | Arm height: 25 in (63.5 cm)



4000-610
Formal Lines

A Neo-classical side chair, the finely carved and gilded angular arched splat back, above an upholstered seat, on square panelled legs. The original George III, circa 1790.

21 x 21¼ x 39 in (53.34 x 53.66 x 99.06 cm)
Upholstered in Old English Leather (2ABJ)
Trim: TA Vintage Nails
Seat height: 20¼ in (51.44 cm)



4100-610
Formal Lines Armchair

A Neo-classical armchair, the finely carved and gilded angular arched splat back, above an upholstered seat, on square panelled legs. The original George III, circa 1790.

22½ x 23 x 40 in (57.15 x 58.42 x 101.6 cm)
Upholstered in Old English Leather (2ABJ)
Trim: TA Vintage Nails
Seat height: 20 in (50.8 cm) | Arm height: 25 in (63.5 cm)

Detail of 4100-610.2ACM





RE61003

Concave Side Cabinet

A fine mahogany, flame veneered and burl banded side cabinet, with three frieze drawers above corresponding oval panel and lozenge inlaid doors enclosing adjustable shelves, with concave sides, on turned legs with brass cappings.

64 x 16 x 36¼ in (162.56 x 40.64 x 92.08 cm)

6102-149

Chocolate Garden

An imbaya chocolate Chinoiserie bar or display cabinet, the break bowfront brass gallery top above a delicately Chinoiserie hand painted interior of two galleried shelves with pierced cabinet doors enclosing lights on square chamfered legs with spandrels. The original George III

53 x 18½ x 60 in (134.62 x 46.99 x 152.4 cm)





BEDROOM



8302-004
Enchanted Evening

A sable, silver painted and floral decorated King Bed frame, the leaf carved serpentine head and footboard, on carved cabriole legs. The original Louis XV.

83¼ x 85¾ x 64¼ in (211.2 x 217.7 x 163.1 cm)



6002-206
Argento Nightstand

A finely carved mahogany and silvered Argento nightstand with hand painted floral decoration, the serpentine marble top above a brushing slide and three graduated drawers on a shaped base with scroll carved legs. Inspired by a Louis XV original.

28 x 18 x 29 in (71 x 45.7 x 73.7 cm)

5002-222
Italian Flora

A silvered and floral hand painted Argento lamp table, the serpentine top above a frieze drawer, on cabriole legs joined by an undertier. The original Louis XV.

24¼ x 24¼ x 27¼ in (61.6 x 61.6 x 69.22 cm)



6002-140
The Opulent East

A Chinoiserie red lacquer serpentine bombé commode / chest of drawers, with fine brass mounts, two finely painted drawers, on cabriole legs with sabots. The original Louis XV.

57¼ x 22¼ x 33¼ in (145.42 x 56.2 x 84.46 cm)

6002-245
Tosca 'Malborough Gold' Nightstand

Nightstand
 Flame Veneered & Crossbanded Top
 'Marlborough' Finish with Brass Line Inlay
 'Marlborough Gold' Hand Leafed Paneled Case and Legs
 Two Bowed Drawers with Brass Handles
 Square Tapering Legs
 27 x 20 x 27 in (68.58 x 50.8 x 68.58 cm)



6002-246
Tosca 'Malborough Gold' Chest

Chest of Drawers
 Flame Veneered & Crossbanded Top
 'Marlborough' Finish with Brass Line Inlay
 'Marlborough Gold' Hand Leafed Paneled Case and Legs
 Three Bowed Drawers with Brass Handles
 Square Tapering Legs
 38 x 20 x 38 in (96.52 x 50.8 x 96.52 cm)



Detail of 6002-245



8305-066

The Rarity

A mahogany and flame mahogany veneered King bed, the serpentine padded headboard with a bold overscroll crest, the moulded edge rails on hand carved cabriole legs with scroll feet. Inspired by a George III original.

83 x 89¾ x 59¾ in (210.8 x 227.86 x 151.8 cm)

Upholstered in Petham Almond Fabric (1AJN)



4400-233

Awaiting his Majesty

A finely carved mahogany and upholstered long stool, the upholstered seat above a serpentine moulded seatrail with leaf carved accents, on moulded and delicate cabriole legs. Inspired by a George III original.

54¼ x 18 x 19 in (137.8 x 45.7 x 48.3 cm)

Upholstered in Petham Almond Fabric (1AJK)

Trim: Welting



6005-502

Henry Hill Brass Mounted Chest

A fine mahogany, flame veneered and Morado crossbanded bedside chest, the serpentine moulded edge top above a veneer inlaid brushing slide and three graduated shaped drawers, flanked by shaped uprights with finely cast brass acanthus leaf mounts, the serpentine apron between splayed feet with fine brass sabots. Inspired by a George III original.

26 x 18 x 27¾ in (66 x 45.7 x 70.5 cm)



6005-480

The Henry Hill Chest

A very fine swirl mahogany veneered and mahogany serpentine chest of drawers, the moulded edge top above three graduated drawers with finely cast handles and escutcheons, the cabriole supports with cast brass mounts trailing to the scroll feet.

44 x 22 x 33 in (111.8 x 56 x 83.8 cm)





OFFICE



Back



Open



7100-117BD
Edwardian Gentleman's Pedestal Desk

A hand carved pedestal desk, with a leather inset top, three frieze drawers, one pedestal with cupboard the other with two drawers and a filing drawer. The original French Provincial.

58 x 30½ x 31 in (147.3 x 77.5 x 78.8 cm)



6300-008
Grand Tour Etagere

A five tier étagère, the shelves between x supports, with two drawers to the lowest tier. The original Regency.

22 x 10 x 61 in (55.9 x 25.4 x 154.9 cm)





4100-767

Bicester

An upholstered and chestnut burl veneered executive chair, the tight channelled back above a tight seat and carved and padded arms, on an adjustable base with wooden legs and castors. Inspired by a Victorian original.



33 x 36 x 43¾ in (83.8 x 91.5 x 111 cm)

Upholstered in Old English Leather (2ADZ)

Trim: French Natural Nails

Seat height: 20 in (50.8 cm)

Arm height: 26¼ in (66.5 cm)



4100-522

Northcote Chair

A hand carved library armchair, with an upholstered panel back and seat, with brass nail head trim, scroll arms, on turned fluted tapering legs. The original Regency circa 1825.

24 x 26¾ x 38 in (60.96 x 68.26 x 96.52 cm)

Upholstered in Old English Leather (DC) / Trim: TA Vintage Nails

Seat height: 20 in (50.8 cm) / Arm height: 27¾ in (70.49 cm)



4000-565

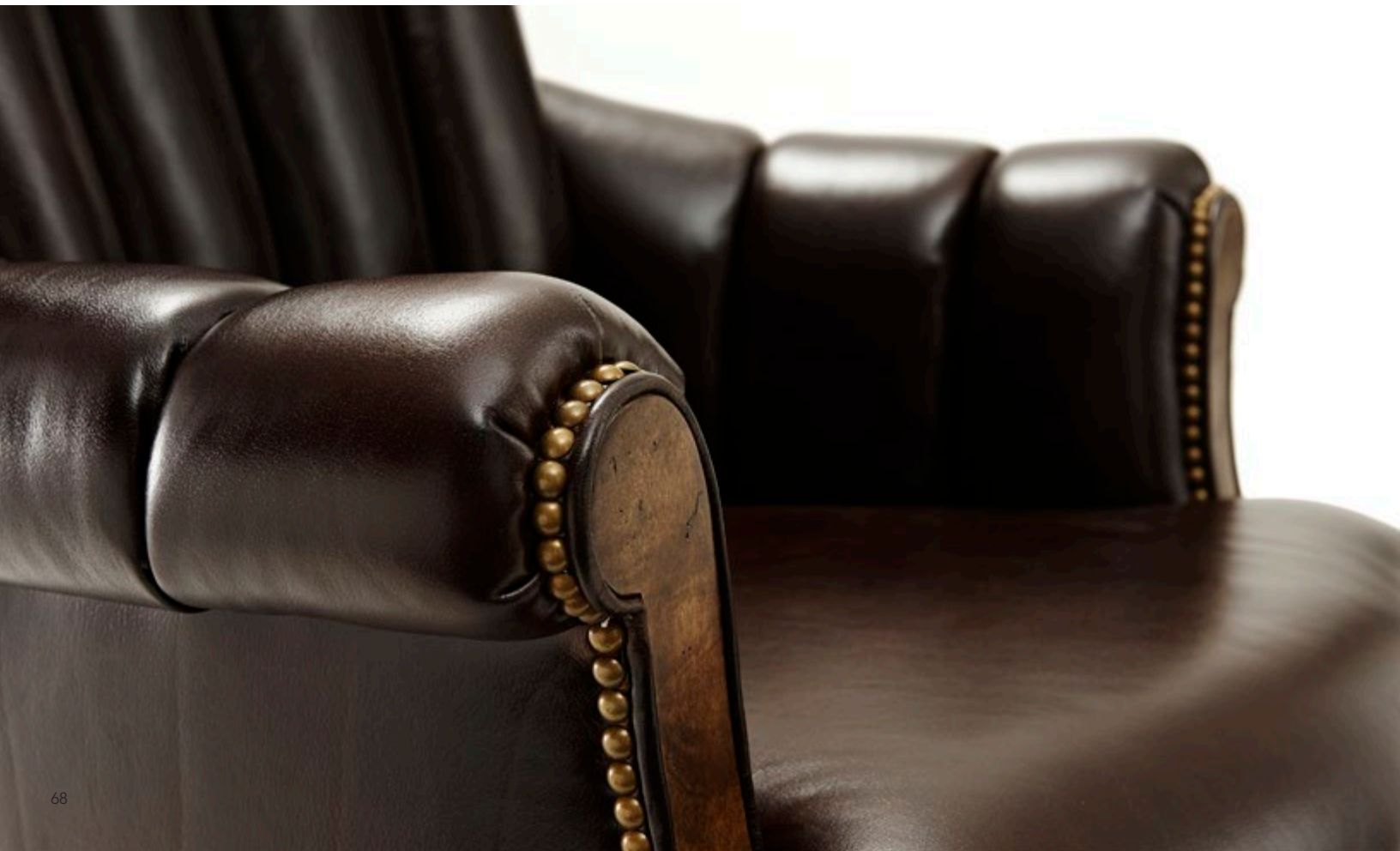
A fine hand carved buckle back side chair

A fine hand carved buckle back side chair, cabriole legs, upholstered seat. The original from Osborne House, Isle of Wight, circa 1860.

18¾ x 20 x 34 in (47.63 x 50.8 x 86.36 cm)

Upholstered in Grey Silk Fabric (1ABL) / Trim: Welting

Seat height: 18½ in (47 cm)



7105-133AN

Missives to a Friend

A flame veneered and mahogany writing desk, the rectangular leather inset top above five drawers surrounding the knee-hole, on turned and brass leaf mounted tapering legs.

60 x 30 x 30 in (152.4 x 76.2 x 76.2 cm)

A close-up photograph of a wooden chest or trunk. The lid is decorated with a repeating pattern of stylized flowers and birds, inlaid into the wood. The pattern is bordered by a dark, zigzag line. Two brass knobs are visible on the side of the chest. The wood has a warm, natural finish.

ACCENTS



4400-035
Wavy Stool

A hand carved stool with an upholstered seat, studded decoration, on turned legs and wavy 'X' stretcher. The original William and Mary.

21½ x 18½ x 22¼ in (54.61 x 46.99 x 56.52 cm)
Upholstered in Antique Buffalo Brown Leather (BB)
Trim: TA Vintage Nails



4400-180
The Director's Stool

A sable mahogany and brass mounted stool in the manner of Thomas Hope, with slung seat, with lion head arm terminals, on a turned 'X' base. The original Regency.

25½ x 21½ x 25 in (64.77 x 54.61 x 63.5 cm)
Upholstered in Old English Leather (DC)
Trim: TA Vintage Nails
Seat height: 21¼ in (53.97 cm)



4200-135
Action!

A mahogany and brass mounted chair, the slung back and cushion seat, with lion head arm terminals, on a turned 'X' base. The original Regency.

25¾ x 22¾ x 37½ in (65.09 x 58.1 x 95.25 cm)
Upholstered in Old English Leather (2ABJ)
Trim: TA Vintage Nails
Seat height: 19½ in (54.61 cm) | Arm height: 26½ in (62.23 cm)



4421-001
A Curious Stool

A verdigris brass adjustable piano stool, with a circular upholstered seat, on Can-Can leather laced boot legs. The original French 19th century.

22 x 22 x 21 in (55.9 x 55.9 x 53.3 cm)
Upholstered in Antique Buffalo Brown Leather (2AAJ)
Trim: TA Vintage Nails



4421-021
Step Away

A button upholstered stool, with a circular seat, on antiqued brass Can-Can leather laced boot legs. Inspired by a French original.

29 x 29 x 20¼ in (73.7 x 73.7 x 51.4 cm)
Upholstered in Isthmian Leather (2ABT)
Trim: French Natural Nails
Seat height: 20¼ in (51.4 cm)



RE44006
The Hall Bench

A carved mahogany and parcel gilt hall bench, the reeded solid seat with lapette carved and scroll end supports, loose button upholstered seat cushion, on turned fluted and tapering legs. The original Regency circa 1820 in the manner of George Bullock. Sold at auction in London for \$7,000.

42 x 16 x 24 in (106.68 x 40.64 x 61 cm)
Upholstered in Old English Leather (DC) / Trim: Welting



4421-022
Surus

A finely cast verdigris brass elephant ottoman, with a button leather upholstered Houda seat.

23 x 11¾ x 19 in (58.7 x 29.8 x 48.3 cm)
Upholstered in Crichton Leather (2ABA)
Trim: TA Vintage Nails
Seat height: 19 in (48.3 cm)



4000-579
Eglomise Accent

A Morado veneered side chair, the oval and 'X' back with painted silvered églomisé decoration, the upholstered seat on turned and fluted legs. The original Empire, circa 1810.

18½ x 23 x 38¾ in (46.99 x 58.42 x 98.11 cm)

Upholstered in Grey Silk Fabric (1ABL) / Trim: Welting
Seat height: 20½ in (52.07 cm)



4100-489
A La Grecque

A hand carved and gilt armchair, with inset églomisé silvered panel back, upholstered seat and scroll arms. The original Regency, circa 1815.

24¼ x 24 x 35½ in (61.6 x 60.96 x 90.17 cm)

Upholstered in Grey Silk Fabric (1ABL) / Trim: Welting
Seat height: 20¼ in (51.43 cm) | Arm height: 27¼ in (69.21 cm)



4000-595
Davenant

A finely carved side chair, with pierced reeded shield back, carved frieze, on turned reeded tapering legs below the upholstered seat. The original Hepplewhite, circa 1790.

19 x 21½ x 36½ in (48.26 x 54.61 x 92.71 cm)

Upholstered in Lillian Cream Fabric (1AVJ)
Trim: Welting
Seat height: 19 in (48.26 cm)



4029-002
The Tula Chair

A 'Tula' side chair in solid stainless steel, the pierced oval wreath cast back above a glass inset seat, on a studded seat-rail above fluted circular section legs. The original 18th century Russian.

20¾ x 20¾ x 37¾ in (52.7 x 53.01 x 96.19 cm)
Seat height: 18 in (45.72 cm)



4100-023
A hand carved Neo-classical open armchair after Adam

A hand carved Neo-classical open armchair after Adam, spoon back, fluted and swag decoration, upholstered seat on turned legs. The original George III.

24½ x 24½ x 39 in (62.23 x 62.23 x 99.06 cm)

Upholstered in Antique Buffalo Brown Leather (2AAJ)
Trim: TA Vintage Nails
Seat height: 20¼ in (50.8 cm)
Arm height: 27 in (68.58 cm)



Detail of 4029-002



5021-317
Ashford

A steel and brass mounted accent table, the veined black marble top set within a brass moulded edge, on steel legs with brass beading and joined by an undertier, on elongated and tapering brass cast acanthus capital feet with brass terminals. Inspired by a 19th century French original.

19 x 19 x 29 in (48.3 x 48.3 x 73.7 cm)



5021-164
Quadrille

A fine verdigris brass occasional table, the brass bound tiled soapstone top above three pilaster legs terminating in paw feet and joined by concave stretchers. Inspired by a Regency original.

12¾ x 12¾ x 27¼ in (32.5 x 32.5 x 69.22 cm)



5005-593
Louis XVI Fine Table

A finely brass mounted okumé veneered and mahogany lamp table, the circular brass bound top above a frieze drawer, on turned and fluted legs joined by a concave sided undertier with a bold pierced brass gallery.

23½ x 19½ x 28½ in (59.69 x 49.53 x 72.39 cm)



5005-597
A Fine Accent

A mahogany and flame veneered lamp table with fine brass mounts, the brass galleried oval top above a frieze drawer on panellled square tapering legs with brass cappings joined by an 'X' stretcher.

19½ x 13½ x 31¼ in (49.53 x 34.59 x 79.38 cm)



5021-015
An Engraved Whatnot

A solid acacia and brass engraved three tier étagère / whatnot, with undulating aprons and turned fluted supports. The original Regency.

16 x 10 x 31 in (40.6 x 25.4 x 78.7 cm)



6321-006
Nook

A brass engraved three tier galleried corner étagère, on turned supports. The original Victorian.

14¾ x 12¾ x 31½ in (37.5 x 32.4 x 80 cm)



5000-030BD
Louis XVI Circle

A circular lamp table, brass gallery, brown leather top and undertier, frieze drawer, square and cabriole legs. The original Louis XVI.

13¾ x 13¾ x 27½ in (34.92 x 34.92 x 69.85 cm)



5005-589
Formalities

A flame veneered and mahogany lamp table with fine brass mounts, the circular brass bound white veined black marble top above a frieze drawer on turned and fluted legs joined by a circular undertier.

26 x 26 x 28 in (66.04 x 66.04 x 71.12 cm)



5005-809
Wyattville

A maple burl and Morado crossbanded tripod table, the circular brass line inlaid top above a baluster turned mahogany column, on three downswept Morado and brass inlaid legs with finely detailed cast brass legs. Inspired by a George III original.

20 x 20 x 26 in (50.8 x 50.8 x 66 cm)



5005-022
Radiating Parquetry

A mahogany and burl sunburst parquetry oval lamp table, with brass gallery and fluted column, on 'C' scroll legs. The original George III.

19¼ x 13¼ x 22 in (48.9 x 33.7 x 55.6 cm)



5005-018
Napoleon Sunburst

A walnut and burl sunburst parquetry lamp table, brass gallery and scroll legs, frieze drawer, hoof feet. The original Napoleon III.

26¼ x 26¼ x 31¼ in (66.7 x 66.7 x 80.6 cm)



5005-047
Two Tier Sunburst

A walnut and burl sunburst parquetry two tier circular centre table, the circular gallery top above a frieze drawer and a similar undertier, on inswept legs. The original Louis XVI.

28½ x 28½ x 30 in (72.4 x 72.4 x 76.2 cm)



RE50008
Curious Isle of Man Tripod

A most remarkable and rare pollard burl and mahogany' Manx' tripod table, the circular top with a fine swag cast brass gallery supported on a turned column with unusual Ballerina legs with bent knees and finely cast brass swag mounts and strapped shoe feet.

24 x 24 x 29 in (60.96 x 60.96 x 73.66 cm)



RE50020
Telescopic Accent

A mahogany circular adjustable telescopic lamp table, with brass swag cast gallery, brass action and turned column, on downswept legs.

16¼ x 15¼ x 34 in (41.28 x 38.74 x 86.36 cm)



5005-112
The Sometime Table

A solid oak and flame veneered three tier lamp table, each elongated octagonal tier with a three quarter pierced brass gallery, on shaped end supports with lozenge ornaments, terminating in splayed feet.

20½ x 13¼ x 28 in (51.8 x 33.7 x 71.1 cm)



5005-579
Louis XV's 1770 Table

A flame veneered and mahogany kidney shaped lamp table, the three quarter brass gallery top above a hand grab frieze drawer flanked by fine brass capitals to the cabriole legs joined by an undertier.

26¼ x 17¼ x 29 in (66.55 x 43.69 x 73.66 cm)



5005-551
Slender Elegance

A fine and delicate mahogany and gilt accent table, the brass bound mother of pearl inlaid and line strung flame veneered top above an undulating hand carved acanthus scroll apron, on slender cabriole legs with fine brass mounts abd sabots, joined by moulded arched stretchers with a brass finial centre.

28¼ x 28¼ x 27½ in (71.76 x 71.76 x 69.85 cm)



5005-572
1810 Table

A mahogany and flame veneered lamp table, the circular brass bound and crossbanded top above three finely brass mounted veneered column legs, on a concave sided trefoil base raised on brass disc feet.

24¼ x 24¼ x 28 in (61.6 x 61.6 x 71.12 cm)



5005-880
Penwork Pembroke

A fine mahogany, flame veneered and satinwood marquetry Pembroke table, the serpentine drop-leaf top with a finely inlaid and Penwork fan to the centre, the Morado crossbanding with floral inlay, above a frieze drawer to one side, on tapering reeded legs terminating in finely cast brass cappings and castors.

41 x 34 x 28 in (104.14 x 86.36 x 71.12 cm)



5005-981
Evangeline

A figured Etimoe veneer, Satinwood banded and marquetry occasional table, the oval reeded edge top inlaid with intricate stringing and marquetry, above a finely veneered apron with a concealed drawer and flowerhead capitals to the bellflower inlaid sabre legs.

28 x 20 x 27 in (71.12 x 50.8 x 68.58 cm)



5005-933
Blondell

Accent Table
Spanish Emperador Marble Top
Flame Veneer
Clear Optical Glass Columns
Rubbed 'Berlin Silver' Mounted Concave Sided Trefoil Base

26 x 26 x 26¾ in (66.04 x 66.04 x 67.94 cm)



5000-570
18th Century Style

A mahogany lamp table with fine brass mounts, the serpentine antiqued glass and brass bound top above an end drawer, on cabriole legs with sabots.

13 x 16¼ x 26 in (33.02 x 41.28 x 66.04 cm)



5000-462
Wisdom of the Regency

A faux book panel accent or bedside table, the aged brown leather inlaid tray top above faux book panelled cabinet doors, on turned and fluted legs joined by a leather inset undertier.

26½ x 20 x 31 in (67.31 x 50.8 x 78.74 cm)



5002-140
Arcadia

A bedside chest or lamp table with Classical landscape découpage decoration, the rectangular dished tray top above three cockbeaded long drawers applied with brass handles, on turned and fluted tapering legs joined by turned stretchers terminating in brass cappings. The original Regency.

26½ x 20 x 31 in (67.31 x 50.8 x 78.74 cm)



5052-017
Empire Reflections

A mahogany and iridescent gilded verre églomisé panelled side table, the square top with protruding rounded corners, on turned and fluted tapering legs joined by an undertier, the back and sides with cast brass 'X' stretchers, the legs terminating in finely cast brass cappings. The original Empire.

24 x 24 x 26 in (60.96 x 60.96 x 66.04 cm)



5002-236
Spectator's Gallery

An imbuja burl and Chocolate Chinoiserie hand painted lamp table, the rectangular top with a fine brass gallery above ring turned legs joined by an undertier. The original Regency.

21 x 16 x 27¼ in (53.34 x 40.64 x 69.52 cm)



Detail of 5002-236



5005-978
Carlton House Accent

A bees-wing satinwood and Morado banded accent table, the cartouche shaped brass edge moulded top with lattice parquetry in Morado, sycamore and ebonised veneer, above a simialr apron and on ebonised stylised Lyre end supports with splayed legs terminating in decoratively cast cappings and brass ball feet. The top hinged to reveal a felt lined compartment and two satinwood panel covered end compartments.

28 x 18 x 28 in (71.12 x 45.72 x 71.12 cm)



5000-159BD
Four in Hand

A mahogany nest of four tables, with brown leather inset tops, on turned supports and splay feet. The originals Regency.

Individual Sizes:

21 x 15 x 29 in (53.3 x 38.1 x 73.7 cm)
18¾ x 14 x 28½ in (47.6 x 35.6 x 72.2 cm)
16½ x 13¼ x 27¾ in (41.8 x 33.6 x 70.8 cm)
14 x 11 x 27¼ in (36 x 28 x 69.4 cm)



5005-758
The Original Quartetto

A nest of four mahogany and inlaid quartetto tables, the rectangular tops each with an Amboyna burl oval inlaid into Satinwood veneer, strung with brass and with a brass moulding and Morado crossbanding, above mahogany and brass strung sides, on turned and fluted legs joined by bowed stretchers on splayed reeded supports.

Individual Sizes:

22 x 15 x 27¾ in (56 x 38 x 70.2 cm)
19½ x 13¾ x 27 in (49.6 x 34.9 x 68.8 cm)
17 x 12½ x 26¼ in (43.4 x 31.7 x 66.95 cm)
14½ x 11¼ x 22½ in (37.2 x 28.5 x 65.1 cm)



5305-201
Georgian Flutings

A flame veneered, Morado crossbanded and sycamore strung console table, the top with a concave front and sides, the banded frieze with a central frieze drawer, on turned and fluted tapering legs with brass feet.

34 x 15 x 33¼ in (86.4 x 38.1 x 84.5 cm)



5305-003
A burl lattice parquetry, brass mounted console table

A burl lattice parquetry, brass mounted console table, four frieze drawers, on turned and fluted legs joined by an undertier. The original Louis XVI.

58¼ x 10¾ x 32¾ in (147.96 x 26.99 x 83.19 cm)



5305-300
Elysian Fields

Console Table
 Hand Painted Floral 'Sheraton' Decoration
 Figured Movingue & Morado Veneer Banded Top
 Mahogany with Hand Carved Details
 Finely Cast Brass Accents

72 x 20 x 34 in (182.88 x 50.8 x 86.36 cm)



5311-012
The Napoleonic Wrought Console

A wrought iron and brass console table, with verdigris brass top, scroll and leaf front and sides, undertier.
 The original Napoleon III.

39¼ x 10¼ x 35½ in (99.7 x 26.04 x 90.17 cm)



5321-028
A Highly Wrought Console

A patinated brass and wrought iron console table, the brass engraved panel top and rectangular undertier with moulded edges, above a Vitruvian scroll engraved frieze and open scrollwork, brass cast acanthus leaf applied front and hinged panel sides, on brass paw feet. The original Louis XVI.

72 x 12 x 39½ in (183 x 30.5 x 100.3 cm)



Detail of 5311-012



RE50025

A Demi Lune Table

A mahogany demi lune console of small proportions, fitted with two central frieze drawers applied with brass handles and locks, on square tapering legs terminating in brass feet joined by an undertier.

22 x 13¾ x 35 in (55.88 x 34.92 x 88.9 cm)



5300-083

Beauty of Leaves

A mahogany and gilt carved bowfront console table, the leaf decorated frieze and drawer above leaf carved turned legs joined by a concave undertier.

30 x 15 x 34 in (76.2 x 38.1 x 86.36 cm)



6105-582

Antonia

A finely marquetry inlaid swirl mahogany, sycamore and satinwood side cabinet, the serpentine top with central penwork fan and bellflower swag inlay, banded in rosewood with ribbon swirl inlay, above two shaped and oval fan inlaid lockable doors, the ingeniously hinged doors opening to reveal two marquetry drawers above an adjustable shelf; the sides with satinwood inlaid ovals.

42 x 20 x 34 in (106.68 x 50.8 x 86.36 cm)



6105-265

A finely inlaid corner cabinet

A mahogany, Morado, laurel burl and pollard oak burl, brass and mother of pearl inlaid corner cabinet, the brass mounted frieze drawer above a musical trophy inlaid cabinet door enclosing an adjustable shelf, on cabriole legs.

30 x 20 x 36¾ in (76.2 x 50.8 x 93.35 cm)



Detail of RE50025



6005-230

Drawing Room Tryst

A mahogany and poplar burl serpentine bombe chest of drawers, with fine brass mounts, two drawers and splay legs. The original Louis XV.

57¼ x 22¼ x 33¼ in (145.42 x 56.2 x 84.46 cm)

6105-480
Cabinetmaker's Masterpiece

A fine satinwood, Morado banded and sycamore marquetry inlaid demi lune side cabinet, the finely leaf and fan inlaid top above an anthemion and honeysuckle inlaid frieze with a drawer, above a classical yew burl inlaid urn and oval walnut banded cabinet door and side panels, enclosing an adjustable shelf, on turned and inlaid tapering legs.

32 x 15 x 32 in (81.3 x 38 x 81.3 cm)



6105-241
The Almack's Sideboard

A flame veneered and Morado banded sideboard, with five drawers and two cabinet doors, on turned fluted legs joined by an undertier.

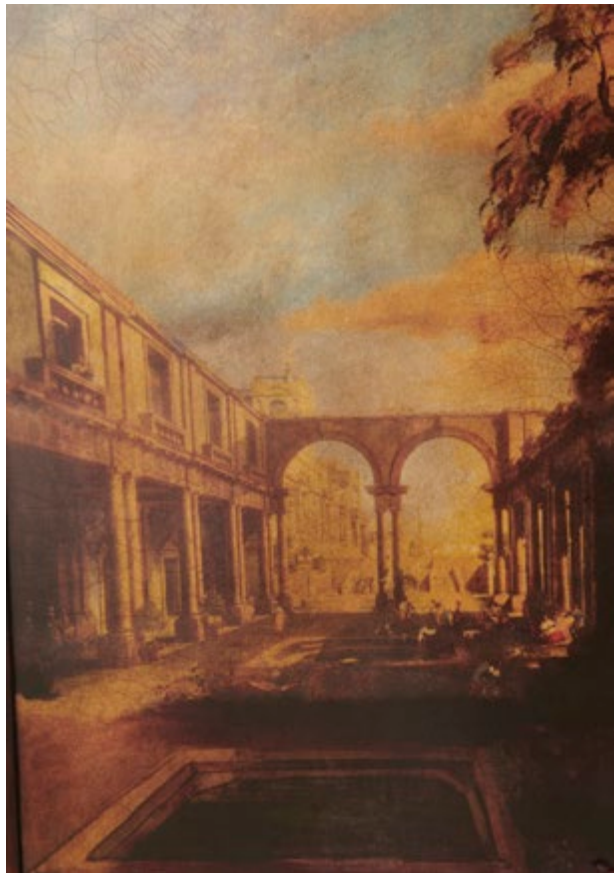
42 x 13¾ x 34 in (106.68 x 34.92 x 86.36 cm)



6121-017
Elaborating on the Regency

A hand carved serpentine break bowfront and brass panel engraved sideboard, with six drawers, on turned and fluted legs joined by an undertier. The original Regency.

68 x 20 x 34 in (172.7 x 50.8 x 86.4 cm)



6002-090
Remembrance of Times Past
 A landscape decoupage chest of drawers, nine drawers, spiral turned uprights, two drawers, turned legs. The original Victorian.
 36 x 18 x 36 in (91.4 x 45.7 x 91.4 cm)



6050-001
Small Starlight Chest
 A silver leaf and antiqued trellis hand mirrored chest of drawers, the rectangular mirror panelled top above two short and three long drawers fitted with brass handles, on bun feet. Inspired by a 1930s Italian original.
 27¼ x 17 x 29¾ in (69.2 x 43.2 x 75.6 cm)



6033-046PD
The Humorous Chest
 A leather panel chest on stand, with nine monkey head handled drawers, on four brass monkey supports and a leather plinth base. The original 19th century Italian.
 42¼ x 16½ x 41½ in (107.32 x 41.91 x 105.41 cm)



Detail of 6033-046PD



Detail of 6105-332



RE60008

Graceful Chinoiserie Commode

A flame veneered and lacquer chest of two drawers, the ends and two drawer fronts hand decorated in Chinoiserie scenes on figured mahogany, with finely cast brass mouldings, ring drop handles and a faux marble painted top.

34 x 18 x 34½ in (86.36 x 45.72 x 87.63 cm)



6105-340

A rosewood veneer and finely brass mounted side cabinet

A walnut veneer and finely brass mounted side cabinet, the breakfront white veined black marble top above three frieze drawers and cabinet doors below enclosed by canted angles on turned and fluted legs, each cabinet enclosing an adjustable shelf. The original Empire.

51½ x 20 x 36¼ in (131.11 x 50.8 x 92.08 cm)



6105-332

A Cerejeira Side Cabinet With Fine Brass Mounts

A mahogany and flame veneered veneered side cabinet with fine brass mounts, the breakfront Sahara marble top with brass moulding, above three frieze drawers and antiqued mirror panel doors with bold brass floral swags, flanked by cast columns on peg feet.

50¼ x 18 x 43½ in (127.64 x 45.72 x 110.49 cm)



6105-329

King's Aviary

A finely inlaid side cabinet or meuble d'appui with fine brass mounts, the white veined black marble breakfront top above three key pattern drawers, with parquetry doors below centred by a mother of pearl marquetry inlay of birds and each enclosing an adjustable shelf, on cabriole legs.

58¼ x 24 x 35½ in (147.96 x 60.96 x 90.17 cm)



6105-467
Slender Display

A mahogany and Morado veneered narrow display cabinet, the concave moulded cornice above a glazed door enclosing adjustable glass shelves and a Morado interior, the lower cabinet with a concave front, one frieze drawer above a brass inlaid concave door with anthemion inlay flanked by column uprights, on a plinth base.

27½ x 16½ x 87¼ in (70 x 42 x 221.5 cm)



5312-007
Toulouse

A chestnut burl veneered and mahogany small console or pier table, the bowfront top above a pierced roundel and upright rustic iron base on a moulded bowfront plinth base. Inspired by a 19th century French original.

20 x 10 x 34¾ in (50.8 x 25.4 x 88.3 cm)



RE17006
A Mahogany and Rosewood Band Torchère

A flame veneered and Morado banded torchère, the square canted edge Brabancon marble top above a flared body with fine brass moulding, on a plinth base with concave cut-out corners.

14¾ x 14¾ x 44 in (37.47 x 37.47 x 111.76 cm)



RE17005
A Classical Torchère

A carved and gilt torchère, the circular top with a carved edge and frieze, on three supports with acanthus bases and capitals, the whole supported on a trefoil concave base and raised on brass winged lions paw feet. The central 'X' form structure of stretchers in brass centred by a ring decorated with flowerhead paterae.

18½ x 16½ x 44 in (46.99 x 41.91 x 111.76 cm)



1023-126
Under The African Sun

A set of two playing brass African elephants lying down and rolling over. Inspired by 19th century Austrian originals.

10 x 13½ x 7½ in (25.5 x 34.3 x 19 cm)

1021-639
Mortimer The Puppy

A verdigris brass model of a puppy dog, seated on its hind legs looking upwards. The original 19th century Austrian.

13½ x 20½ x 20½ in (34.29 x 52.07 x 52.07 cm)



1023-101
Symbolic Crane on Turtle

A variously patinated brass statue of a crane standing on a walking turtle base. The original 19th century Japanese.

16 x 9¾ x 29½ in (40.6 x 24.8 x 74.9 cm)

1023-102
The Myth

A set of two large variously patinated brass cranes, standing on walking turtles. Inspired by 19th century Japanese Meiji period originals.

13 x 19 x 58 in (33 x 48.3 x 147.3 cm)

Detail of 1023-126





1100-842BD
The Victorian Library Tray

A brown tooled leather covered tray of rectangular shape with gallery and brass handles of clasping hands. The original Victorian.

31½ x 20½ x 5 in (80 x 52.1 x 12.7 cm)



1121-004
Curious Umbrella Stand

A curious umbrella stand, the three verdigris brass and leather strapped 19th century Can Can boots joined by a rope-twist and hand gilt centre issuing tassels and a brass carrying handle. Inspired by a 19th century French original.

13½ x 11½ x 34 in (34.3 x 29.2 x 86.36 cm)



2021-633
Meiji Cranes

A pair of verdigris brass table lamps, each with a crane standing on a turtle, on burl plinth bases, with pleated silk shades. The originals Japanese Meiji period.

10 x 10 x 33 in (25.4 x 25.4 x 83.82 cm)



2021-876
Soaring

A finely cast brass and mahogany table lamp, the body of a cast polished brass branch with two verdigris brass flying ducks, mounted on a mahogany base and surmounted by a hand sewn shade and a branch cast finial.

23½ x 17 x 31 in (59.7 x 43.2 x 78.5 cm)



1612-014
Planted Ribbons

A tôle ware silvered and gold ribbon painted planter, the cylinder body with a flared rim, on turned feet.

24 x 24 x 22 in (61 x 61 x 56 cm)



1325-001
Reef Centrepiece

A gilt metal centre piece of a finely cast coral tree with six brass candleholders.

37¾ x 14¼ x 15½ in (96 x 36.2 x 39.5 cm)



2021-709
The Cabochon Lamp

A fine brass and onyx table lamp, the vase body with Neo-classical mounts, the base with onyx cabochons, surmounted by a hand sewn and embroidered silk shade. The original Louis XVI.

16½ x 16½ x 39½ in (41.91 x 41.91 x 100.63 cm)



2021-712
Malmaison

A pollard burl and finely cast brass table lamp, the twin light arms above a shaped base with brass mounts surmounted by hand sewn silk shade. The original Louis XVI.

22 x 15 x 30¼ in (55.88 x 38.1 x 76.84 cm)



2121-086
Empire Standard

A verdigris brass and leather panelled floor lamp, the urn capital and square base with lion paw feet, surmounted by a hand sewn silk shade. The original Napoleon III.

20 x 20 x 70 in (50.8 x 50.8 x 177.8 cm)



2021-865
Still Aquarium

A finely cast brass table lamp, the base of a tropical fish swimming in coral, on a stepped marble plinth base, surmounted by a hand sewn silk shade and a brass coral finial.

16 x 16 x 29¼ in (40.5 x 40.5 x 74.3 cm)



2021-929
Coastal Lamp

A finely cast brass 'bamboo' table lamp, the gathered bamboo body on a black lacquered and brass platform base surmounted by a fabric shade with a bamboo cast finial.

17 x 11 x 33½ in (43.2 x 28 x 85 cm)



2005-045
The Cascading Leaf Lamp

A finely cast brass and poplar burl mosaic inlaid table lamp, the acanthus cast capital and laurel wreath cast base centred by a shaped body, surmounted by an ovoid hand sewn silk shade. The original French Empire.

15 x 10 x 27½ in (38.1 x 25.4 x 69.85 cm)



3102-031
An Architectural Cornice

A carved and gilt pier mirror, with architectural cornice, rectangular bevelled edge plates, three bracket shelves and verdigris brass finial. The original George III.

15½ x 6¼ x 61¼ in (39.37 x 15.88 x 155.58 cm)



3102-444
Cream Capet

Pier Mirror / Mahogany
Hand Leafed Royal Silver Finish
Bevelled Mirror Plate

15½ x 3¼ x 59½ in (39.37 x 8.25 x 151.13 cm)



RE31004
The Linnell 'C' Scroll Mirror

A fine hand carved gilt wood wall mirror after John Linnell, the acanthus 'C' scroll framed marginal plates with a shell and cartouche crest enclosing a rectangular lattice astragal antiqued mirror plate. The original George III, circa 1770. From a Private London Collection.

40 x 2 x 70 in (101.6 x 5.08 x 177.8 cm)



3152-004
In the Round

A verre églomisé silvered and gilt framed circular wall mirror, circular bevelled edge plate. The original Art Deco.

54 x 1¾ x 54¼ in (137.2 x 4.4 x 137.5 cm)

3102-355
Peerage

A hand carved and suede gilt wall mirror, the scroll and acanthus leaf carved frame enclosing a rounded rectangular plate. The original George II, circa 1750.

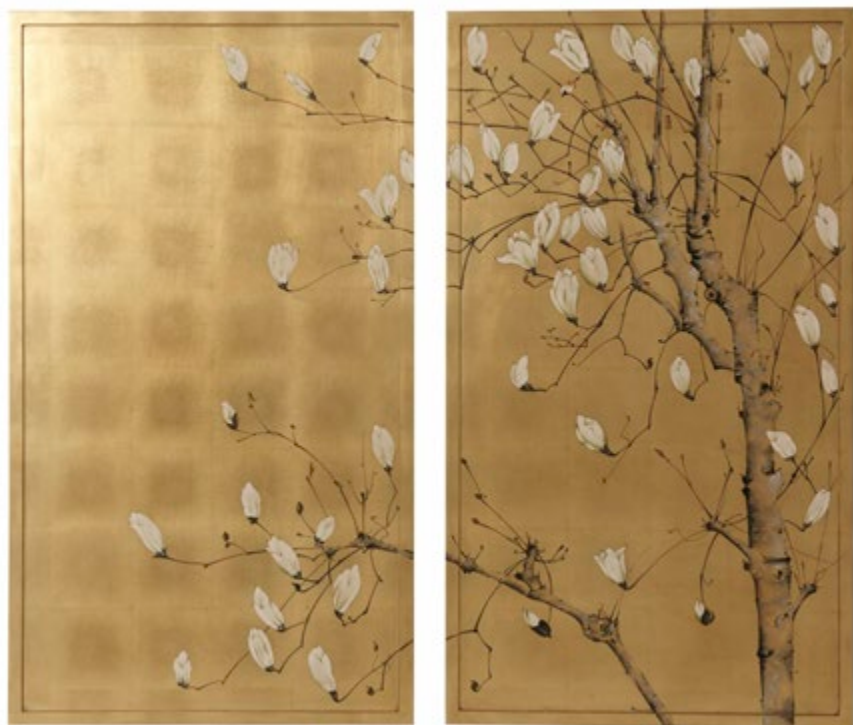
28 x 1½ x 52½ in (71.12 x 3.81 x 133.65 cm)



3202-361
Spring Magnolias

A set of two paintings, each with a hand gilt background depicting a Japanese Magnolia painted sans traverse across the two panels. The originals Japanese, circa 1900.

56¼ x 0¾ x 49½ in (142.88 x 2.21 x 126.03 cm)



3002-047
Birdsong

A set of four crackled silver and floral hand painted wall panels, each within a square silvered and antique mirror panelled frame. Inspired by 19th century French originals.

25 x 1½ x 25 in (63.5 x 3.8 x 63.5 cm)



APPEARANCE

All products are manufactured to the highest standards from natural materials and with the utmost care and attention to detail. Whilst we make every effort to accurately reproduce the colours of the furniture illustrated, differences in texture, grain and colour are inherent in all natural woodwork and should be expected as the individual characteristics of materials used. Variations in these qualities are not manufacturing defects and will not be accepted as such for the purpose of claims. Some changes in colour or texture may occur during the life cycle of the product, particularly in leather, wood and veneer.

All exposed surfaces of are prepared, sanded and finished, even though at times they are not visible. This includes the undersides, the back and the inside of the drawer boxes amongst others.

DIMENSION, SPECIFICATIONS AND STYLE

When giving overall dimensions we may use some rounding.

Product specifications are not binding and we reserve the right to make changes without notice. Please refer to your shipment for final sizes and specifications.

Where descriptions refer to particular historical styles, this does not indicate the product stems from this period in any aspect other than in design inspiration.

INTELLECTUAL PROPERTY

We are proud of the unique designs created by our skilled designers and craftsmen. To protect your investments, infringements of any proprietary (trademarked, patented, copy righted or otherwise protected) design or right will be pursued to the full extent of the law. We will take legal action against any person and / or company that knowingly or unknowingly infringes upon our intellectual property rights. Trademarks, collection names, design and design elements in the catalog may be the subject of pending and issued copyrights, trademark registrations and patents.

THEODORE ALEXANDER

theodorealexander.com

